

**ONE SURFACE**  
MANY POSSIBILITIES



***Kajaria***



# ***Kajaria***



Aerial view of virat nagar plant, (Rajasthan)



Only tile company in India to be conferred with "superbrand" for the thirteen times in a row.



Awarded Asia's Most promising brand.



Certified member of Indian Green Building Council

# WE PURSUED EXCELLENCE, LEADERSHIP FOLLOWED

Kajaria Ceramics is the largest manufacturer of Ceramic and Vitrified tiles in India. It has an annual capacity of 86.47 mn. sq. meters, distributed across seven plants.

The motivating factor remains the zeal to be the best, to be at the top and to achieve the highest echelons of excellence.

The manufacturing units are equipped with cutting edge technology. Intense automation, robotic car application and a zero chance for human errors are just few reasons why Kajaria remains at the top in the industry.

The best in providing tile solutions, Kajaria has since then grown stronger with its hard work, innovation and patronage from our discerning customers.

## AWARDS & ACCOLADES

- ISO 9001:2015 :Certification for Implementing Quality Management System Standards.
- ISO 14001:2015 : Certification for Implementing Environmental Management System Standards.
- ISO 22000:2018 : Certification for Implementing Food Safety Management System Standards.
- ISO 50001:2018 : Certification for Implementing Energy Management System Standards.
- ISO SA 8000:2014 : Certification for Implementing Social Accountability Management System Standards.
- ISO 45001:2018 : Certification for Implementing Occupational Health and Safety Management System Standards.



***Kajaria***  
**POLISHED**  
VITRIFIED TILES

**ONE SURFACE**  
MANY POSSIBILITIES



# INDEX



**SOLITAIRE PLUS(DOUBLE CHARGE)**  
80X160 CM 06-13

**STONEGRES PLUS NEO(FULL BODY)**  
80X160 CM 14-19

**SOLITAIRE PLUS**  
100X100 CM 20-25

**SOLITAIRE**  
80X80 CM 26-33

**TROPICANA**  
80X80 CM 34-37

**SAPPHIRE**  
60X120 CM 38-47

**STONE ART**  
60x120 CM 48-67

**TERRAZZO**  
60x120 CM 68-71

**STEPSTONE (STEP)**  
30x120 CM 72-79

**STEPSTONE (RISER)**  
20X120 CM 72-79

**STONEGRES PLUS**  
60X120 CM 80-85

**STONEGRES NEO**  
60X120 CM 86-89

**STONEGRES NEO**  
60X60 CM 90-93

**STONEGRES**  
60X60 CM 94-97

**AMAZON**  
60X60 CM 98-101

**DOUBLE CHARGE**  
60X60 CM 102-107

**CLASSIC**  
60X60 CM 108-109

**ELEGANT SOLUBLE SALT**  
60X60 CM 110-113

**DURATECH-XT**  
60X120 CM 114-123

**DURATECH-XT**  
60X60 CM 124-131

**DURATECH**  
40X40 CM 132-145

**DURATECH CLADDING**  
30x45 CM 146-151





## Solitaire Plus

800x1600 MM

### Ideal for Urban Choice

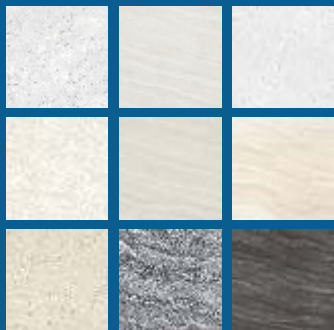
---

Kajaria introduces Solitaire Plus 800x1600mm double charge tiles in high gloss super sheen nano surface. Emanating a breathtaking visual impact of a space, Solitaire Plus slabs are aesthetically pleasing and its grandeur and bold look demonstrate its utility and splendiddness.

The Solitaire Plus double charge tiles provide stain resistance and easy maintenance.

---

### Double Charge Polished Vitrified Tiles





K-16801



K-16802







K-16804



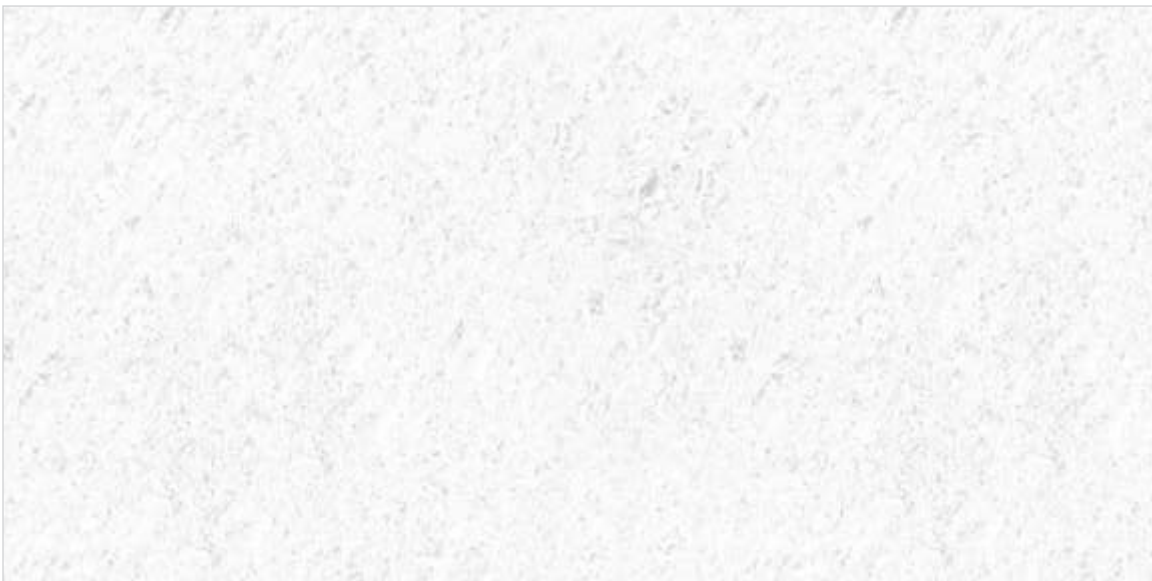
K-16805







K-16806



K-16810







## StoneGres Plus Neo

800x1600 MM

**FULL  
BODY**

### Ideal for Urban Choice

---

Kajaria introduces StoneGres Plus Neo - FULL BODY Tiles in size of 800x1600mm which is a revolution in the Polished Vitrified Tiles product category. Serving as an ideal solution to numerous applications, Adding to its reliability, these slabs have very low water absorption, which ensures the surface remains 100% moisture free, evading the growth of bacteria and fungus. The StoneGres Plus Neo full body tiles provide stain resistance and easy maintenance.

---

Full Body  
Vitrified Tiles | Matt | Polished







K-16861

MATT | POLISHED



K-16862

MATT | POLISHED

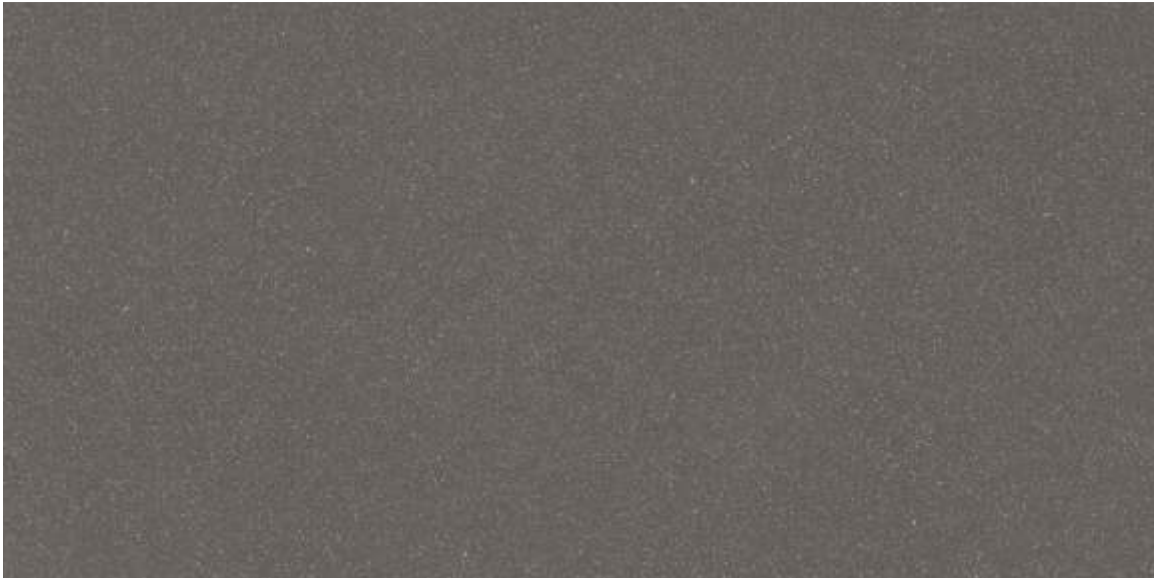


# StoneGres Plus Neo

800x1600MM

Full Body Vitrified Tiles

Matt / Polished

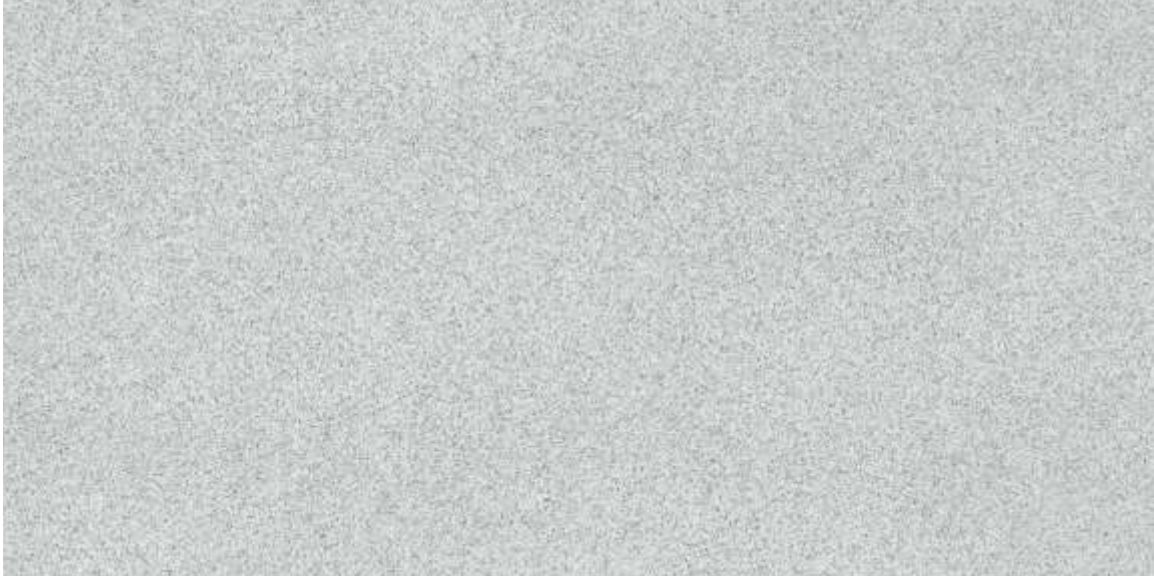


K-16863

MATT | POLISHED







K-16864

POLISHED



K-16865

POLISHED



## Solitaire Plus

1000x1000 MM

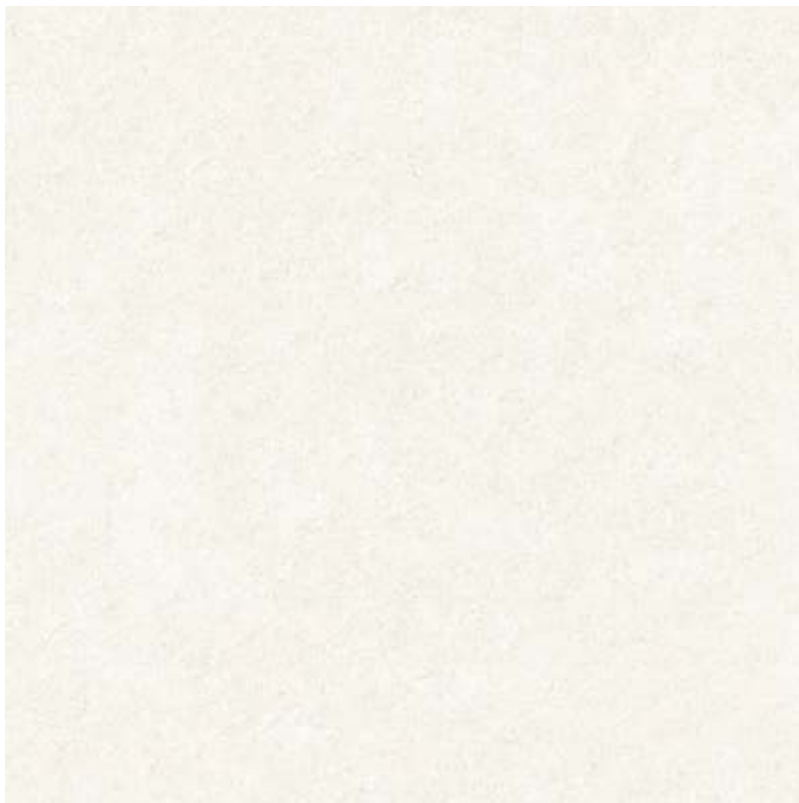
### One Surface Many Possibilities

Introducing Solitaire Plus 1000x1000 mm vitrified tiles. Kajaria's exclusive technologies, high standards and reliability are matched with style, taste and design of these tiles. Indulge into a grandiosity of space which reflects refined delicacies. The tiles symbolize the epitome of a luxe yet contemporary collection.

### Double Charge Polished Vitrified Tiles







K 10102



K 10104











K 10105



K 10107



## Solitaire

800x800 MM

### The Gem of Every Adobe

The essential synthesis of aesthetics and quality of materials, Solitaire is the shining gem in polished vitrified tiles, with a profound aesthetic design, and the emblem of Kajaria. These 80x80 cm floor tiles are remarkable in appeal and embraces all colors. Kajaria's exclusive technologies, high standards and reliability are matched with style, taste and design of these tiles. Indulge into a grandiosity of space which reflects refined delicacies. The tiles symbolize the epitome of a luxe yet contemporary collection.

### Double Charge Polished Vitrified Tiles







K 8401



K 8402



K 8405



K 8409



**Kajaria**







K 8501



K 8502



K 8503



K 8504



K 8506









## Tropicana

800x800 MM

### Alluring Beauty

---

With the interplay of astounding grandeur and blissful perception of space, this series will surely charm your heart and refine your space. The 80x80 cm tiles enable you to expand your boundaries of imagination and design with a glorious display of various designs to adorn your floors. Skillfully crafted by using state-of-the-art technologies, these tiles are durable in both form and function. Experience the constant balance between modernity and harmony aligning with the most innovative standards.

---

### Double Charge Polished Vitrified Tiles

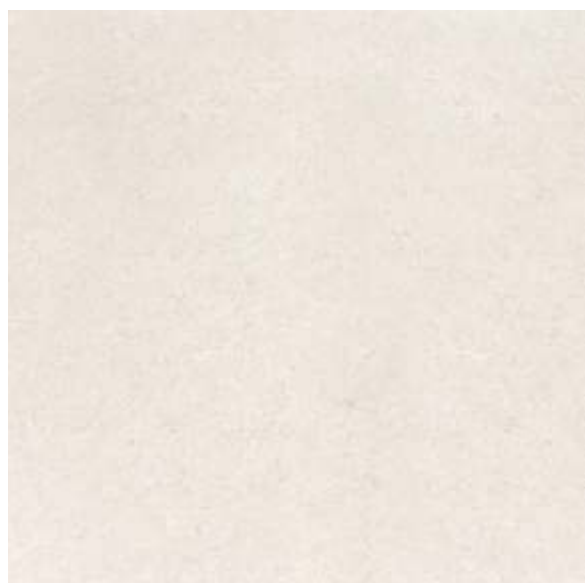




K 8301



K 8306



K 8307



# COOUTURE GALLERY





## Sapphire

600x1200 MM

### Beauty in Perfect Size.

---

Introducing double charge polished vitrified tiles in the size of 60x120 cm for the first time in India. Sapphire is created from the evolution of metropolitan style, that makes up the urban lifestyle. Created with the finest elements and conceived with a unique vision, Sapphire combines sensational designs with practical dimensions in one compelling form. A stunning product, cladding all kinds of interiors, conferring harmony and charm in the most mesmerizing way.

---

### Double Charge Polished Vitrified Tiles







K 12601



K 12602

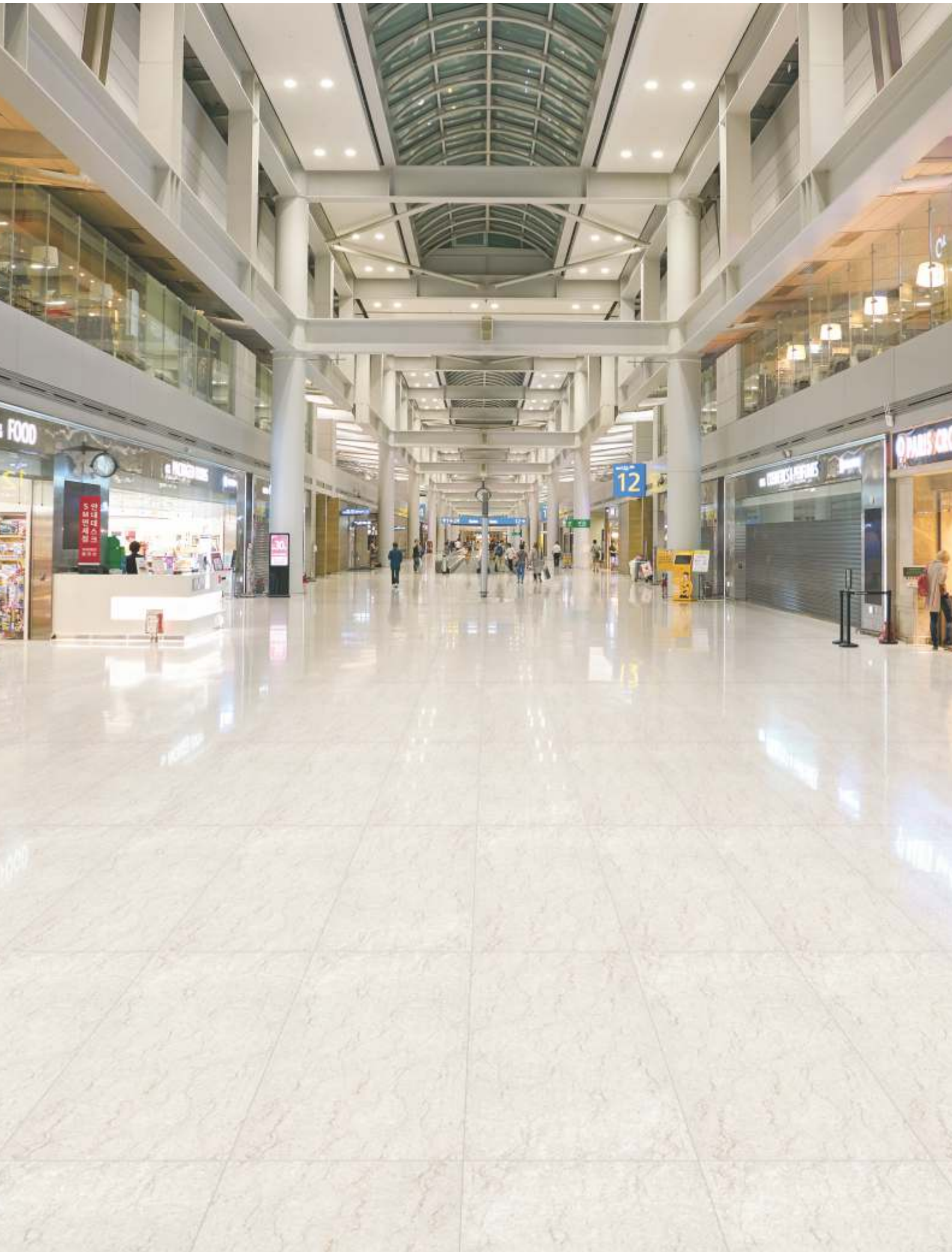


K 12604



K 12605









K 12606



K 12608



K 12609



K 12611



K 12612



K 12618



K 12623



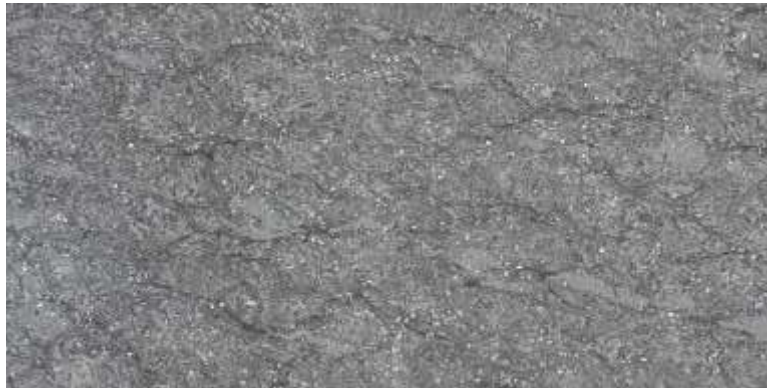
K 12626

# Sapphire

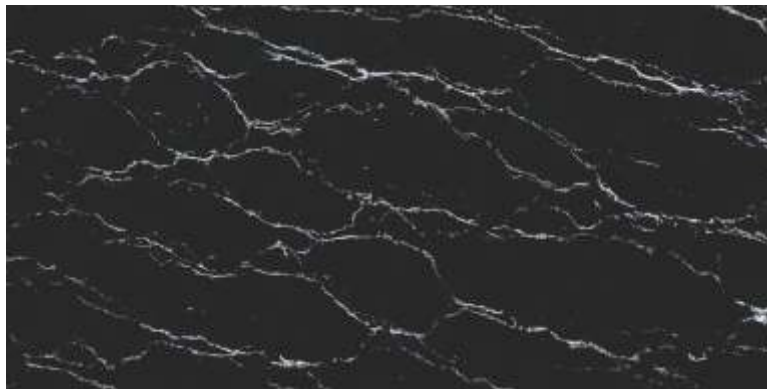
600x1200MM

Double Charge Polished Vitrified Tiles

Super Glossy



K 12627



K 12628



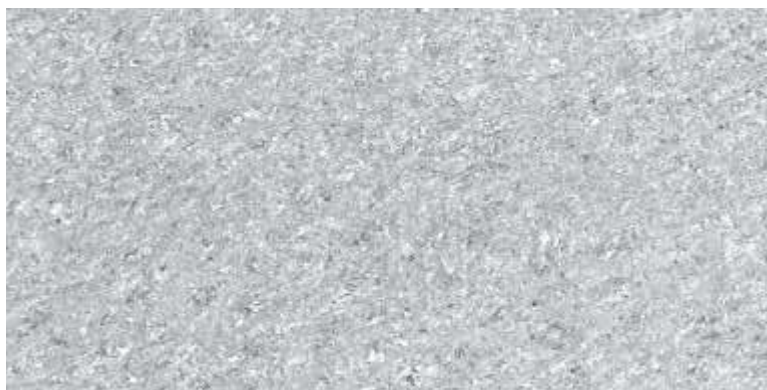


**Kajaria**

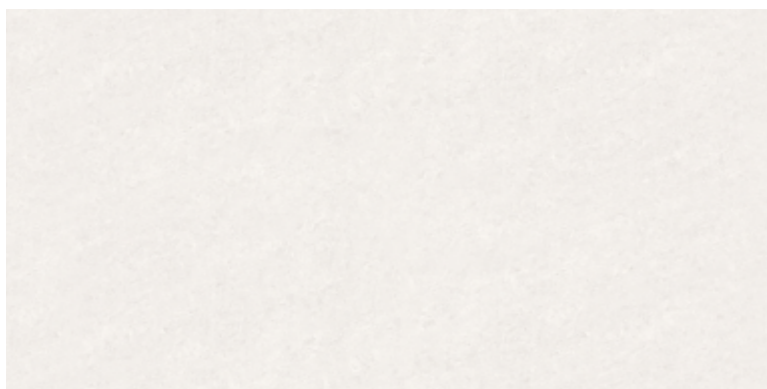




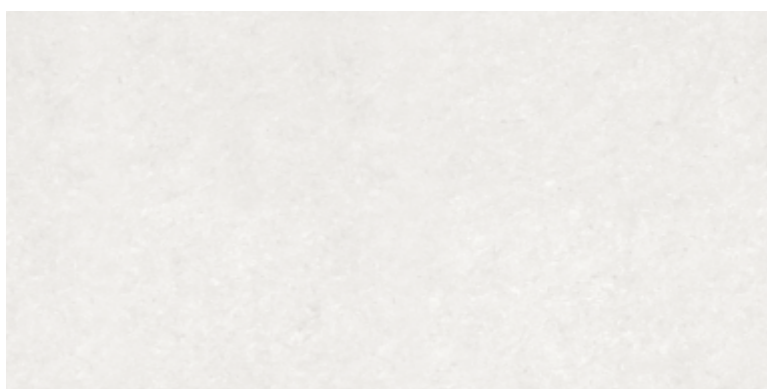
K 12629



K 12642



K 12646



K 12647







## Stone Art

600x1200 MM

**FULL  
BODY**

## The Aesthetic Culture

---

The Stone Art full-body collection reproduces the effects of the finest stone, combining the strength and durability of vitrified tiles. The tiles are available in five stunning textures - Plain, Geometric, Slate, Rock, and Liner - and come in nine colors. Kajaria's 60x120 cm Stone Art full-body tiles introduce an aesthetic culture that enhances both indoor and outdoor spaces to a whole new level. These random vitrified tiles demonstrate superb resilience to harsh weather, making them ideal for high-traffic areas.

---

### Full Body Vitrified Tiles





12660 (WHITE) - PLAIN



12660 (WHITE) - GEOMETRIC



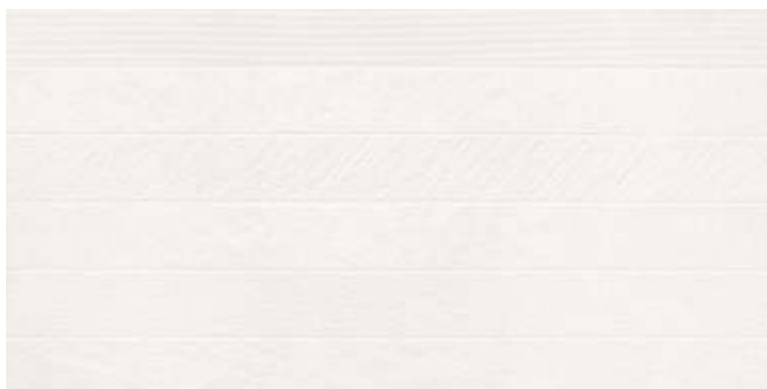
12660 (WHITE) - SLATE



12660 (WHITE) - ROCK



12660 (WHITE) - LINER



12660 (WHITE) - MAGIC





12661 (CREMA) - PLAIN



12661 (CREMA) - GEOMETRIC



12661 (CREMA) - SLATE



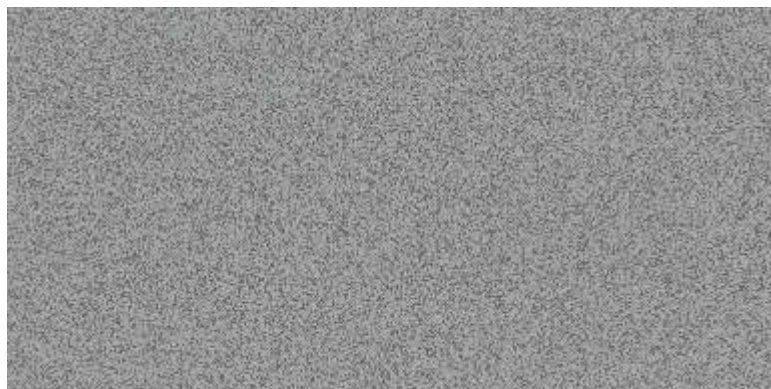
12661 (CREMA) - ROCK



12661 (CREMA) - LINER



12661 (CREMA) - MAGIC

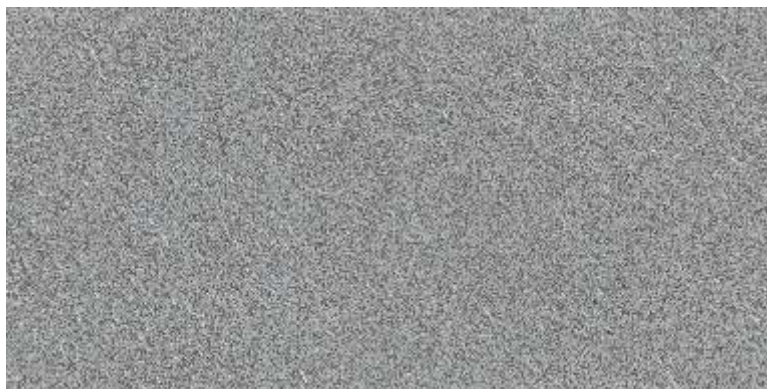


12662 (DARK GREY) - PLAIN

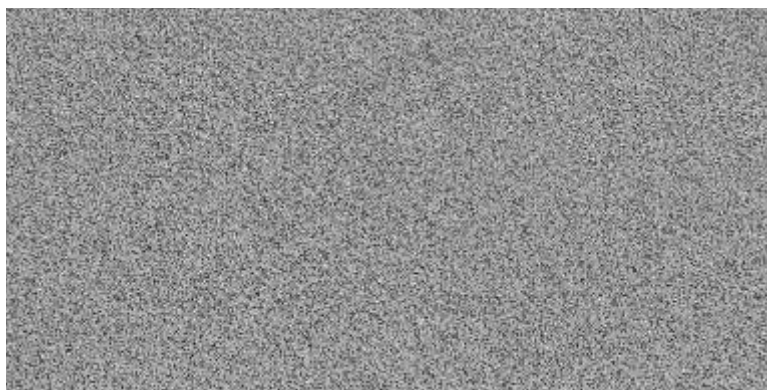


12662 (DARK GREY) - GEOMETRIC

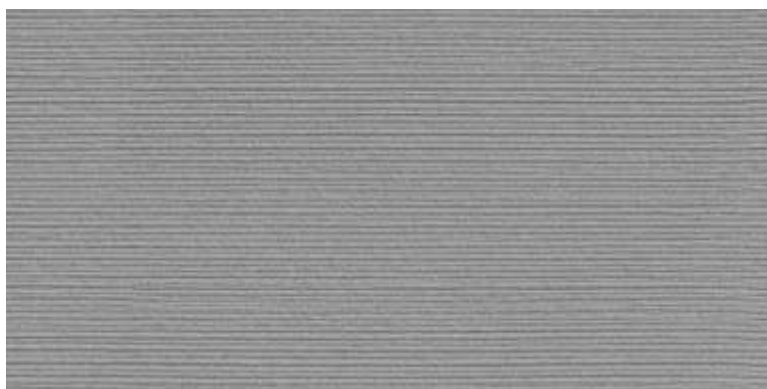




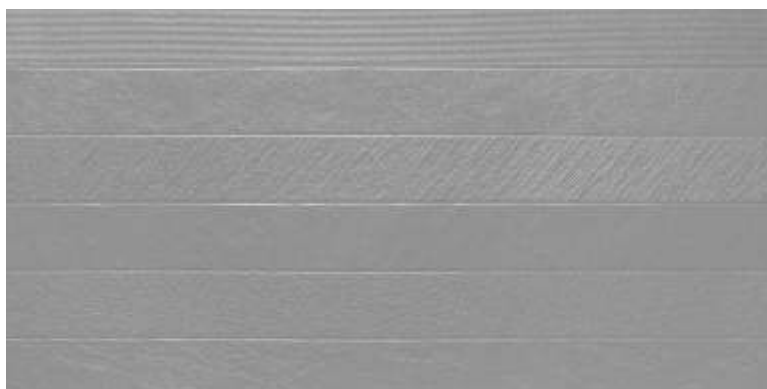
12662 (DARK GREY) - SLATE



12662 (DARK GREY) - ROCK



12662 (DARK GREY) - LINER



12662 (DARK GREY) - MAGIC



12663 (BROWN) - PLAIN



12663 (BROWN) - GEOMETRIC



12663 (BROWN) - SLATE



12663 (BROWN) - ROCK



12663 (BROWN) - LINER



12663 (BROWN) - MAGIC





12664 (BARLEY) - PLAIN



12664 (BARLEY) - GEOMETRIC



12664 (BARLEY) - SLATE



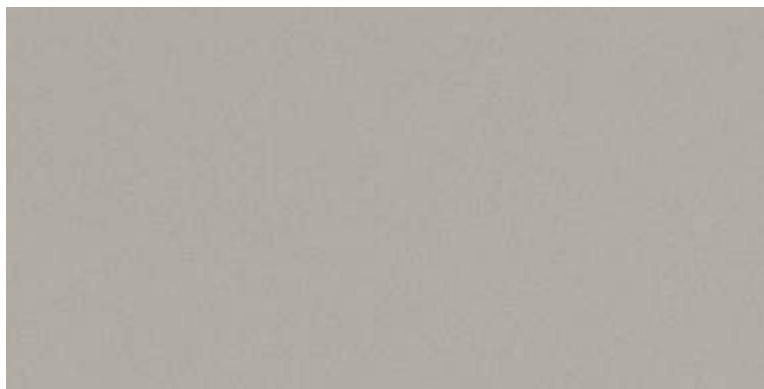
12664 (BARLEY) - ROCK



12664 (BARLEY) - LINER



12664 (BARLEY) - MAGIC



12665 (GREY) - PLAIN



12665 (GREY) - GEOMETRIC



12665 (GREY) - SLATE



12665 (GREY) - ROCK





12665 (GREY) - LINER



12665 (GREY) - MAGIC



12666 (BLACK) - PLAIN



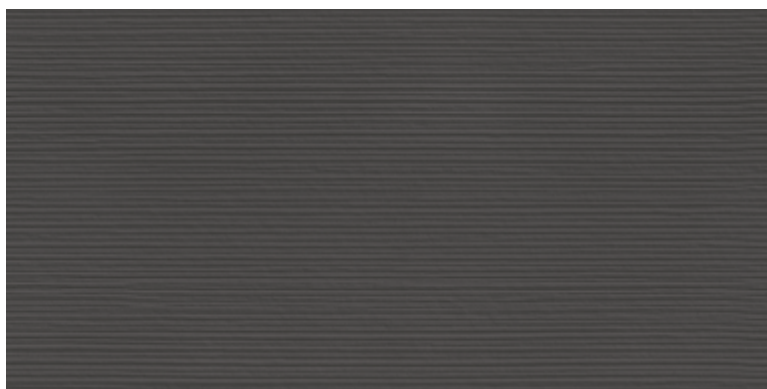
12666 (BLACK) - GEOMETRIC



12666 (BLACK) - SLATE



12666 (BLACK) - ROCK

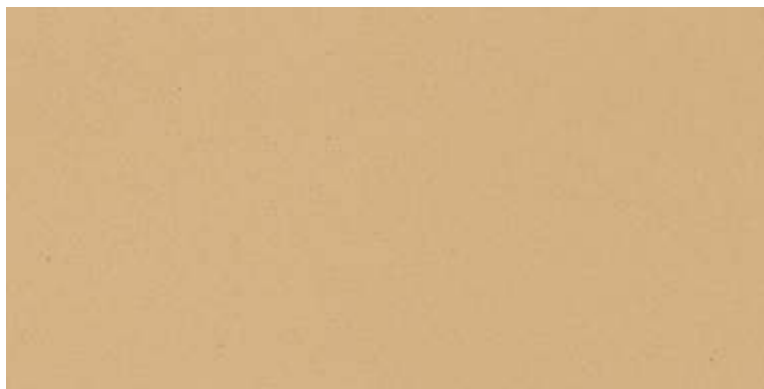


12666 (BLACK) - LINER



12666 (BLACK) - MAGIC

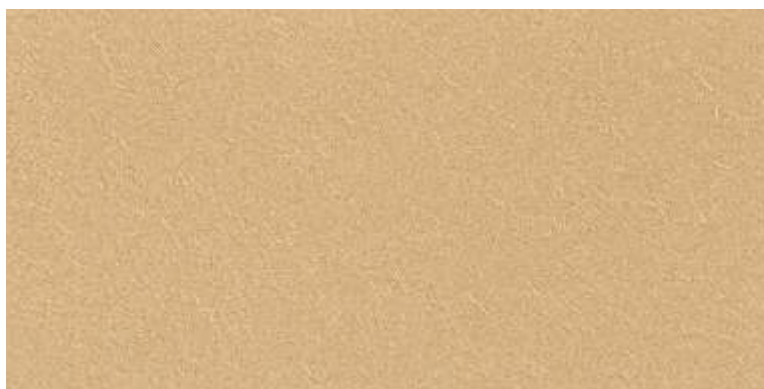




12667 (JAISALEMER) - PLAIN



12667 (JAISALEMER) - GEOMETRIC



12667 (JAISALEMER) - SLATE



12667 (JAISALEMER) - ROCK



12667 (JAISALEMER) - LINER



12667 (JAISALEMER) - MAGIC



12668 (KOTA GREEN) - PLAIN



12668 (KOTA GREEN) - GEOMETRIC





12668 (KOTA GREEN) - SLATE



12668 (KOTA GREEN) - ROCK



12668 (KOTA GREEN) - LINER



12668 (KOTA GREEN) - MAGIC





## Terrazzo

600x1200 MM

**FULL  
BODY**

## Inner Beauty which captivates

---

Terrazzo is a uniformly textured surface designed for interior & exterior use in which the matrix is depressed to expose the chips. The newer thin-set and epoxy-based terrazzo options are less labor intensive with greater design flexibility.

---

### Full Body

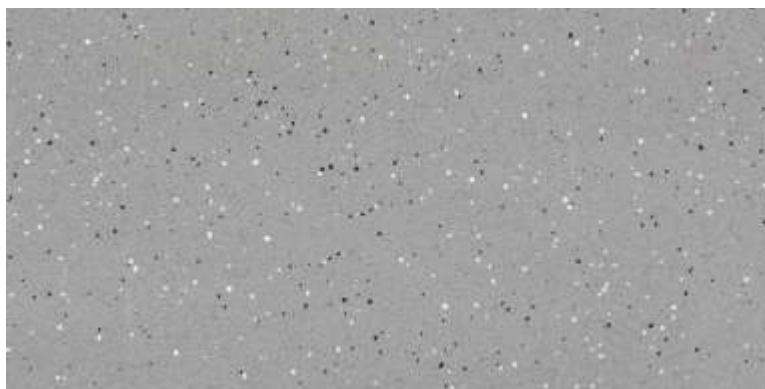
Vitrified Tiles | Polished | Matt







12671 - POLISHED/MATT



12672 - POLISHED/MATT



12676 - POLISHED/MATT



12677 - POLISHED/MATT



12681 - POLISHED/MATT



12682 - POLISHED/MATT



# STEP STONE

READY TO INSTALL VITRIFIED STEPS



SELF EMBOSSED  
TREAD LINES



ANTI SKID  
SURFACE



BULL NOSE  
FINISH



THICKNESS  
12 MM (STEPS)



WATER  
ABSORPTION  
<0.05%



FULL BODY  
VITRIFIED STEPS



EASY  
LAYING

Highly durable, ideal for heavy traffic and commercial areas, Indoor & Outdoor.

Easy and speedy installation. Say goodbye to cumbersome cutting and finishing on site.

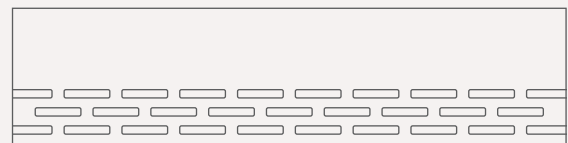
Embossed Tread Lines Provide extra grip for higher safety near step edge. Unique full bull nose edges

Provides higher strength and durability as desired in big size slabs. An assurance to replace natural stones in a confident way. Highest abrasion resistance

Ensures 10 times superior surface protection against wear and tear over natural stones.

Available in 8 beautiful Salt & Pepper shades. Suits the building theme, décor and desired contrast.

Sizes available



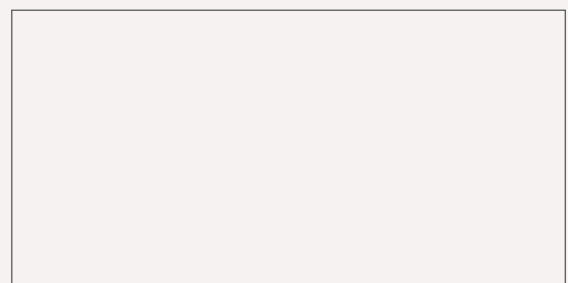
steps

300x1200mm



riser

200x1200mm



landing area tile

600x1200mm



## Step Stone

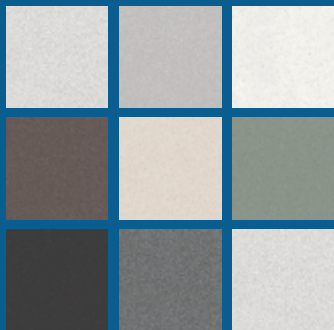
300x1200 MM STEP  
200x1200 MM RISER

**FULL  
BODY**

## Ready to Install Steps and Risers

Stairs and staircases are not defined by their functionality alone. These practical units are also interesting from a design perspective as well-appointed stairs are today a defining feature in houses, rooms or hallways. Kajaria Step Stone Vitrified Steps and riser comes with different colours and shades, suits to your interior and exterior spaces.

Full Body  
Vitrified Tiles | Matt



# Step Stone

300x1200MM STEP  
200x1200MM RISER

Full Body Vitrified Tiles

Matt



12351 | STEP

300x1200MM



12251 | RISER

200x1200MM



12651 | LANDING AREA TILE

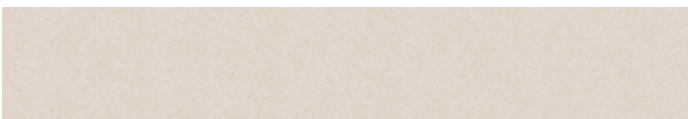
600x1200MM





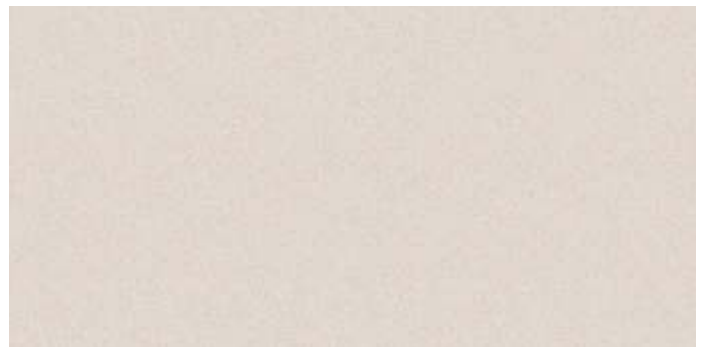
12352 | STEP

300x1200MM



12252 | RISER

200x1200MM



12652 | LANDING AREA TILE

600x1200MM

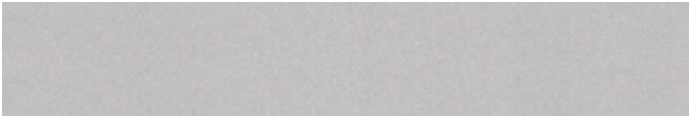


# Step Stone

300x1200MM STEP  
200x1200MM RISER

Full Body Vitrified Tiles

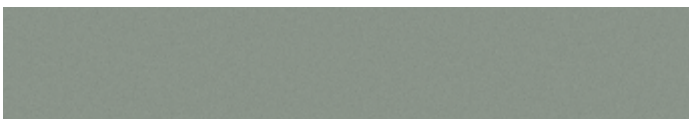
Matt





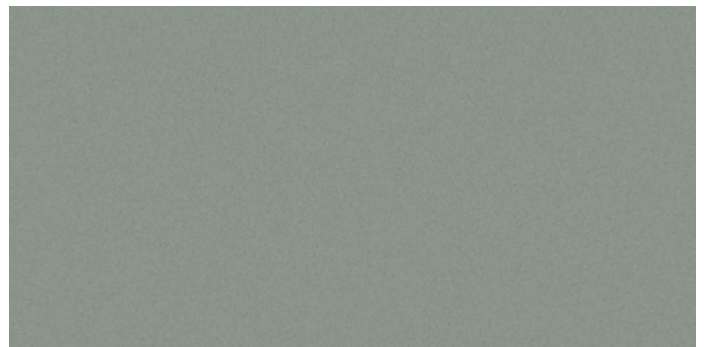
12355 | STEP

300x1200MM



12255 | RISER

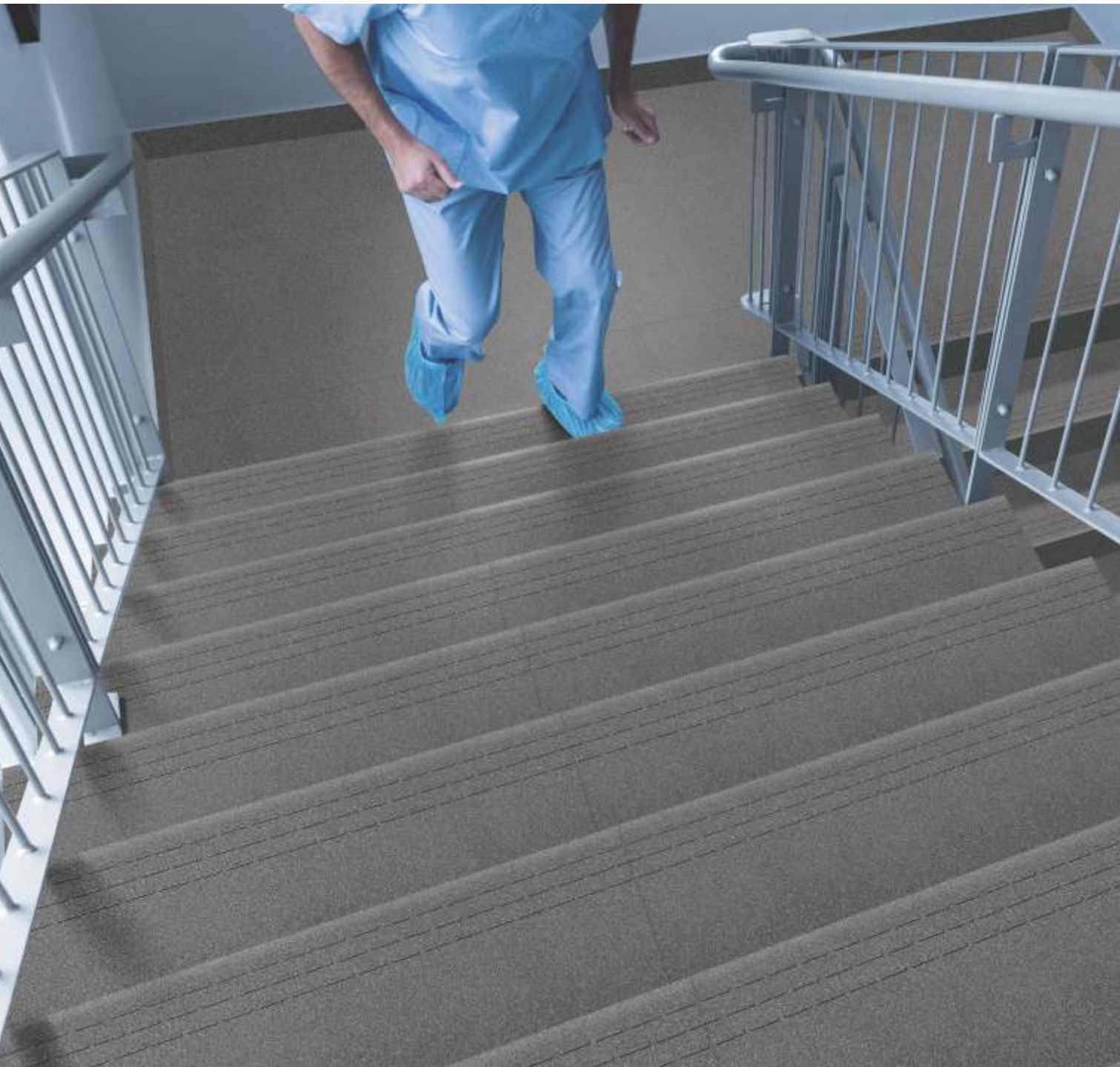
200x1200MM



12655 | LANDING AREA TILE

600x1200MM





12356 | STEP 300x1200MM



12256 | RISER 200x1200MM



12656 | LANDING AREA TILE 600x1200MM



# Step Stone

300x1200MM STEP  
200x1200MM RISER

Full Body Vitrified Tiles

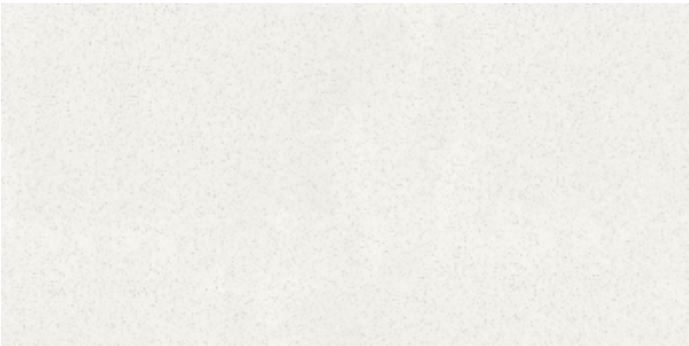
Matt



12357 | STEP 300x1200MM



12257 | RISER 200x1200MM



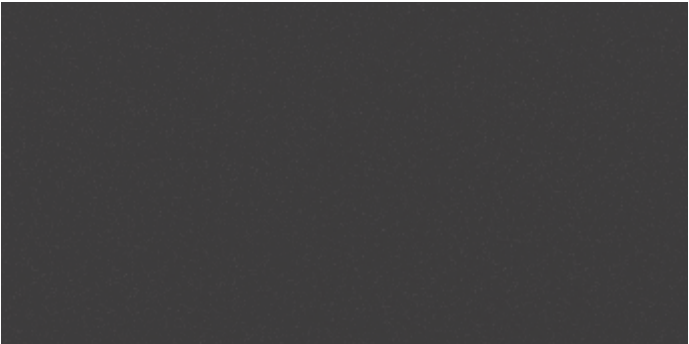
12657 | LANDING AREA TILE 600x1200MM



12358 | STEP 300x1200MM



12258 | RISER 200x1200MM



12658 | LANDING AREA TILE 600x1200MM



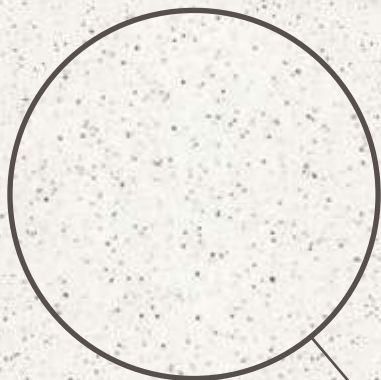




Deep  
**Chamfering**



Fullbody  
**Surface**



Extra  
**Texture**

## StoneGres Plus

600x1200 MM

**FULL  
BODY**

### Journey into Yourself

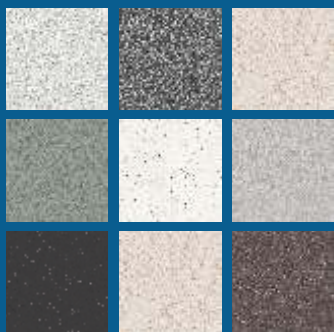
---

STONE GRES PLUS is able to evoke the beauty of antique stone paving, natural effect stones that provide a unique touch to any setup. STONE GRES PLUS is ideal to create passageways in modern gardens terraces and patios as well as interior and heavy transit area.

---

Full Body

Vitrified Tiles | Polished | Matt







12651 - POLISHED/MATT



12652 - POLISHED/MATT



12653 - POLISHED/MATT



12654 - POLISHED/MATT





**Kajaria**



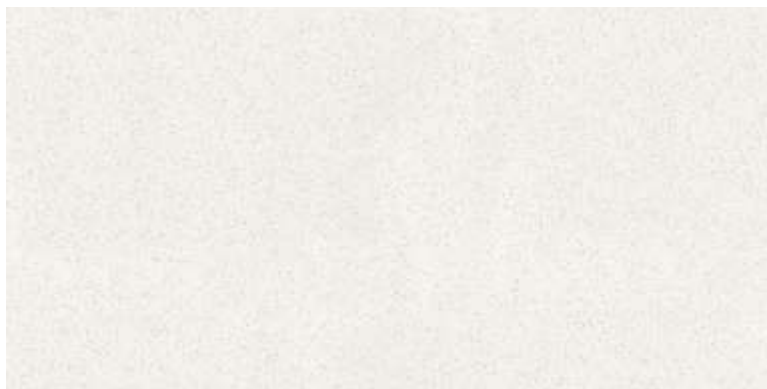




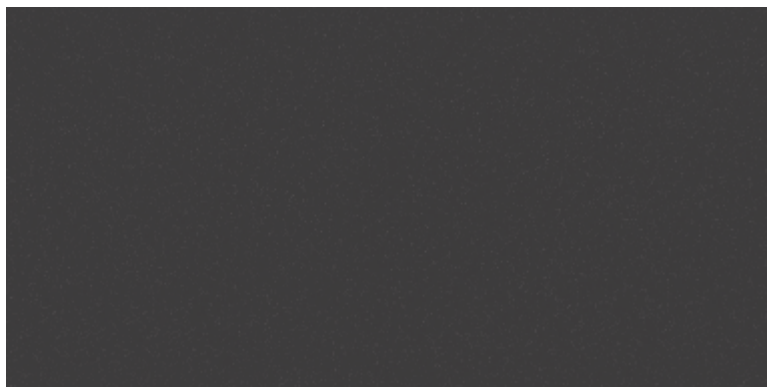
12655 - POLISHED/MATT



12656 - POLISHED/MATT



12657 - POLISHED/MATT



12658 - POLISHED/MATT



## StoneGres Neo

600x1200 MM

**FULL  
BODY**

### Tough build and unmatched quality

---

Kajaria introduces STONE GRES NEO Full Body Tiles in size of 600x1200mm which built with the best raw materials and technology, these full body tiles offer a sturdy, lasting performance for years with minimum wear and tear. These tiles have a uniform colour throughout and are consistent in their shape, size, and colour. This adds a classy and seamless look to your spaces that looks great for years without fading.

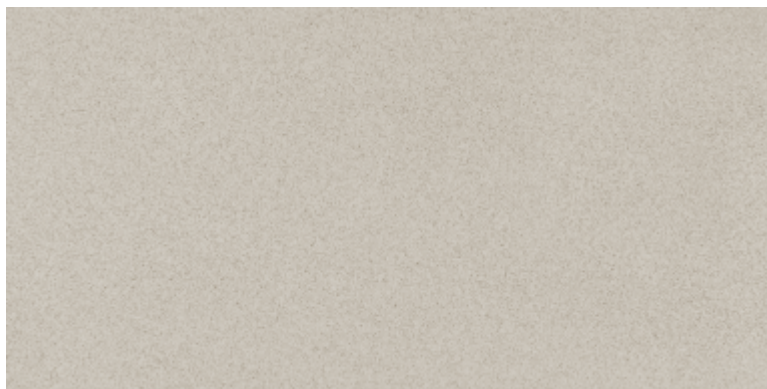
---

Full Body

Vitrified Tiles | Matt | Polished







12691

MATT / POLISHED



12692

MATT / POLISHED



12693

MATT / POLISHED



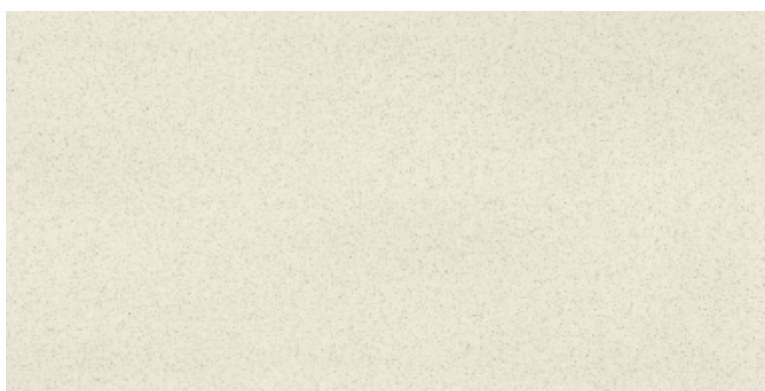
12694

MATT / POLISHED



12695

MATT / POLISHED

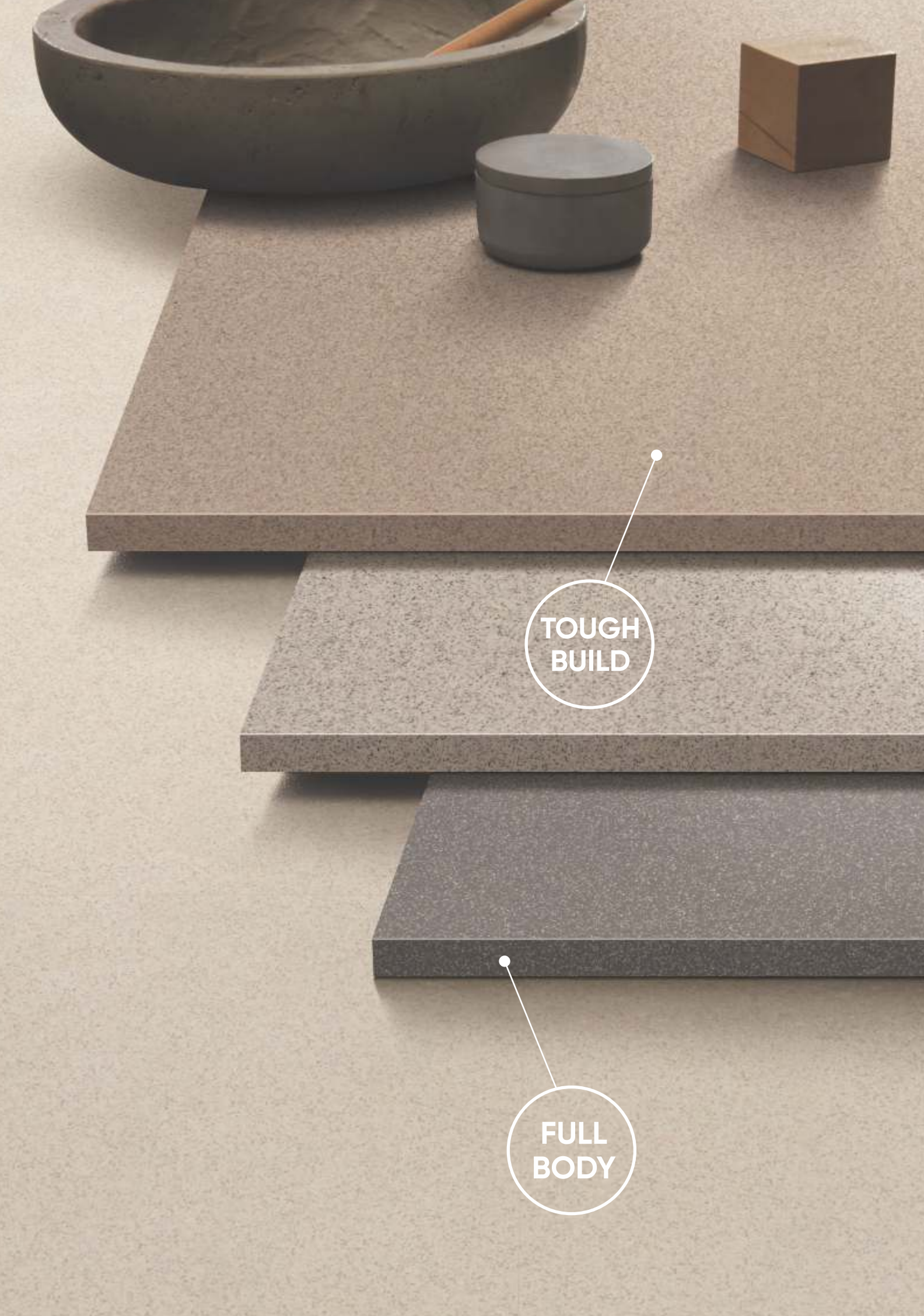


12696

POLISHED







TOUGH  
BUILD

FULL  
BODY



## StoneGres Neo

600x600 MM

**FULL  
BODY**

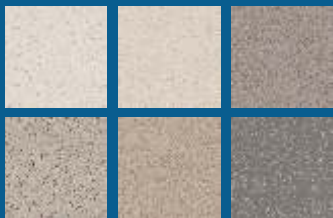
### Sturdy build and unmatched quality.

---

STONE GRES NEO built with the best raw materials and technology, these full body tiles offer a sturdy, lasting performance for years with minimum wear and tear. These tiles have a uniform colour throughout and are consistent in their shape, size, and colour. This adds a classy and seamless look to your spaces that looks great for years without fading.

---

Full Body  
Vitrified Tiles





K 6700 - POLISHED



K 6701 - POLISHED



K 6702 - POLISHED



K 6700 - MATT



K 6701 - MATT



K 6702 - MATT

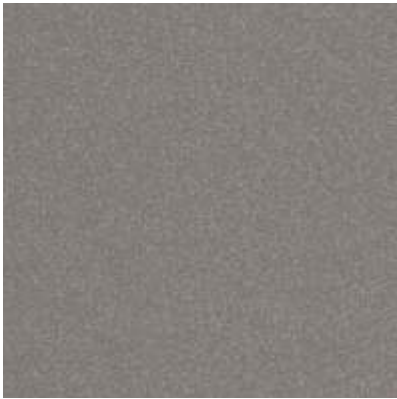




K 6704 - POLISHED



K 6705 - POLISHED



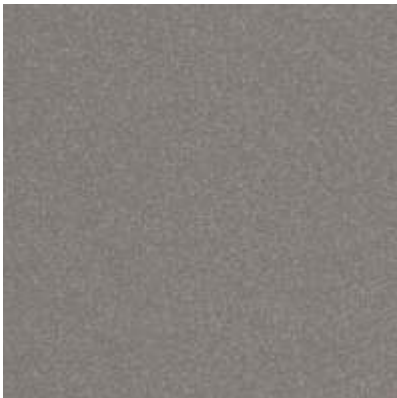
K 6706 - POLISHED



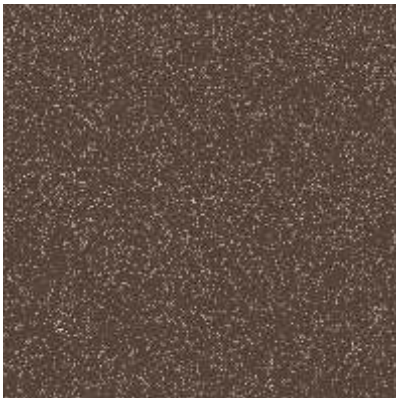
K 6704 - MATT



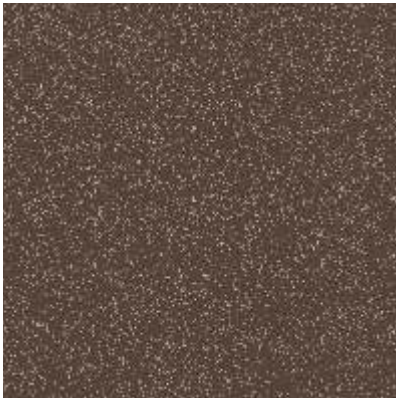
K 6705 - MATT



K 6706 - MATT



K 6709 - POLISHED



K 6709 - MATT







## StoneGres

600x600 MM

**FULL  
BODY**

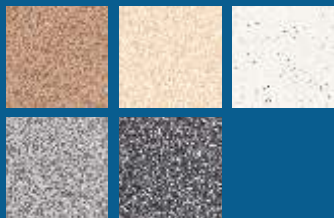
## Tough build and unmatched quality

---

STONE GRES is able to evoke the beauty of antique stone paving, natural effect stones that provide a unique touch to any setup. STONE GRES is ideal to create passageways in modern gardens terraces and patios as well as interior and heavy transit area.

---

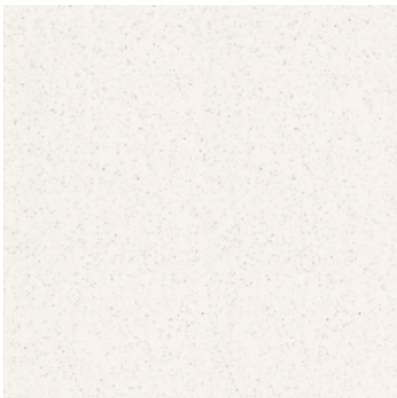
Full Body  
Vitrified Tiles







K 6601 - POLISHED



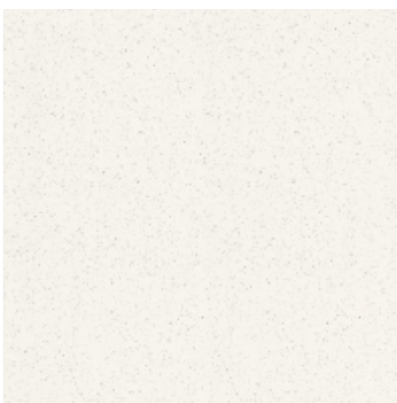
K 6602 - POLISHED



K 6603 - POLISHED



K 6601 - MATT



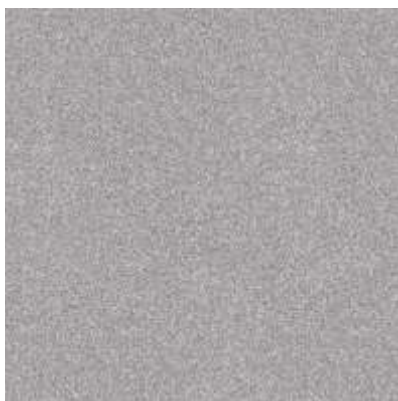
K 6602 - MATT



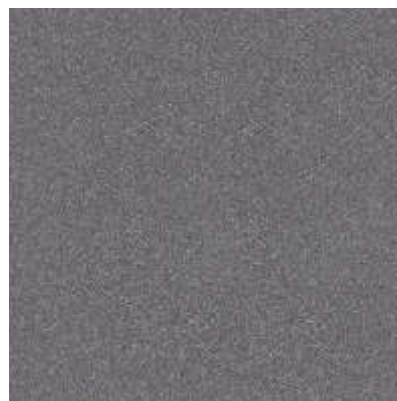
K 6603 - MATT



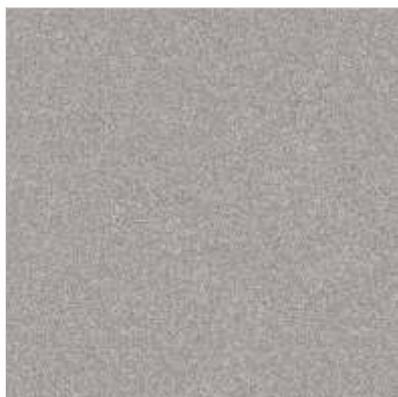




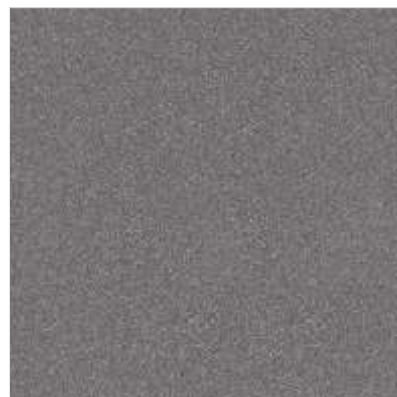
K 6604 - POLISHED



K 6605 - POLISHED



K 6604 - MATT



K 6605 - MATT



## Amazon

600x600 MM

## Italian Beauty Amazing Strength

---

Amazon series by Kajaria inspired by tradition and the most beautiful Italian natural stones, obtained through the use of the most advanced production technologies. The double charge surface represent something unique in terms of the refinement of the details that always original and distinctive. The appearance of polished marble floors and the refined beauty of classical surfaces has now become Amazon - Double Charge Polished Vitrified Tiles.

---

### Polished Italian Vitrified Tiles





# Amazon

600x600MM

Polished Italian Vitrified Tiles

Super Glossy



K 6401



K 6402



K 6403



K 6404



K 6405

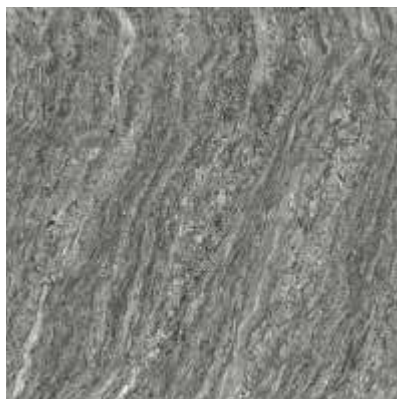


K 6406





K 6407



K 6411



K 6413







## Double Charge

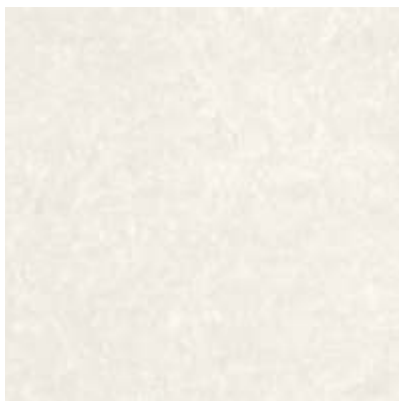
600x600 MM

### Electrifying Spaces

A range of Double Charge Polished Vitrified Tiles that comprises the finest quality tiles for you to transform your space. The Double Charged Series incorporates tiles designed to enthrall one's senses with sophisticated shades inspired by the beauty of natural stone. Ideal for both homes as well as corporate offices, the Double Charged Series is the new definition of beauty. These double charge tiles are further protected through modern Nano-Technology and super shined through superior modern polishing which adds premium look to your flooring.

### Double Charge Polished Vitrified Tiles





K 6032



K 6201 \*



K 6203



K 6204 \*



K 6205 \*



K 6206

# Double Charge

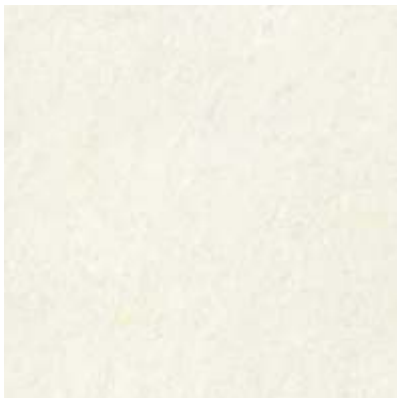
600x600MM

Polished Vitrified Tiles

Super Glossy



K 6207 \*



K 6209 \*



K 6210 \*



K 6211



K 6212



K 6213 \*

\* for North & East





# Double Charge

600x600MM

Polished Vitrified Tiles

Super Glossy



K 6214 \*



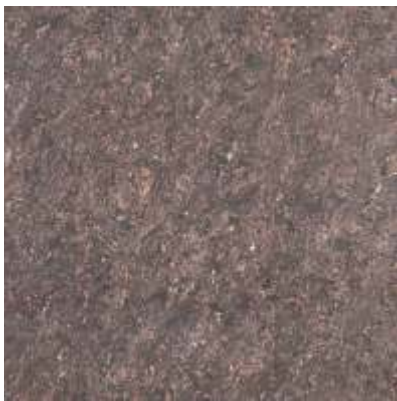
K 6217



K 6218



K 6219



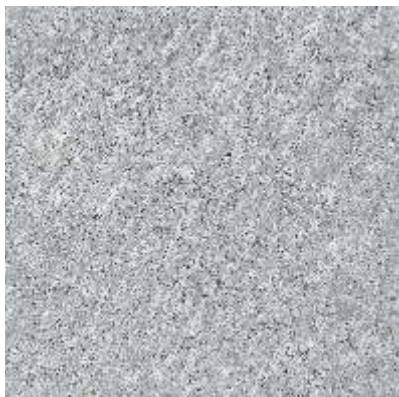
K 6223 \*



K 6301 \*

\* for North & East



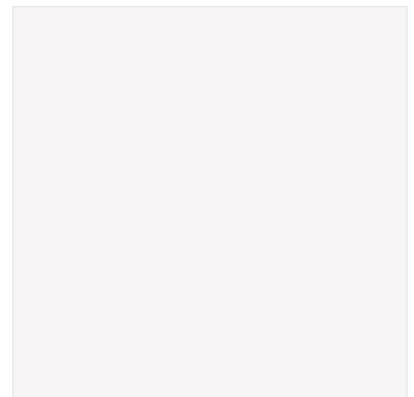


K 6302 \*

\* for North & East



K 6306



K 7000

SPECIAL PLAIN COLOUR



Classic

600x600MM

Double Charge Polished Vitrified Tiles

Super Glossy



K 6351 \*



K 6352 \*



K 6353 \*







K 6354 \*



K 6355 \*



K 6356 \*



## Elegant Soluble Salt

600x600 MM

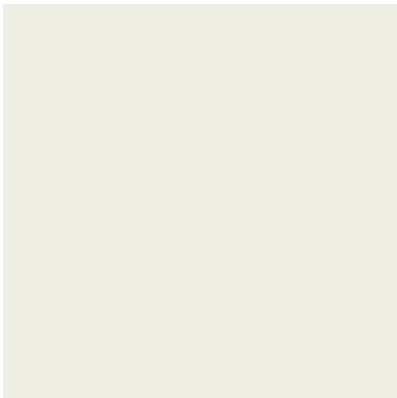
### Rediscover Elegance

An exceptional range of soluble salt tiles that exude the attractiveness and splendor of the spaces. The range of tiles is light in weight yet sturdy, available in varied elegant and fancy textures. The Elegant Soluble Salt collection is available in different styles to fit the needs of traditional as well as modern spaces. This range brings together the sophisticated look of high gloss finish combined with superior functionality. The unmatched physical and chemical properties coupled with matchless designs make these tiles suitable for all settings.

### Polished Vitrified Tiles







K 6000



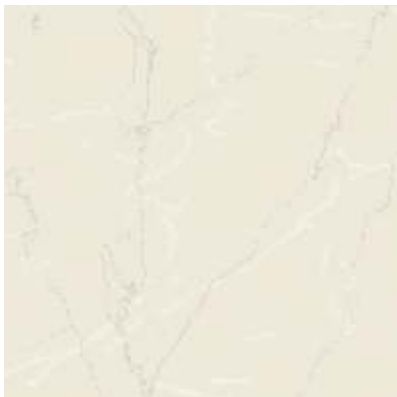
K 6002



K 6008



K 6010



K 6014



K 6018



K 6019



K 6107



MARBELLA



DYNA



THUNDERSTORM



CICILIA

# Elegant Soluble Salt

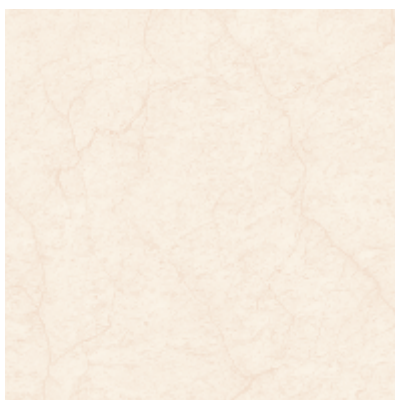
600x600MM

Polished Vitrified Tiles

Super Glossy



WOODENZA



CRACK





**12mm**  
ULTRATHICK OUTDOOR VITRIFIED TILES

**<0.10**  
WATER ABSORPTION

## Features :



HIGHER  
THICKNESS



WATER ABSORPTION  
<0.10%



RECTIFIED



RESISTANT TO  
STAINS



ANTISLIP



HIGHLY UV  
RESISTANT



RESISTANT TO  
SCRATCHES



EASY TO  
CLEAN



FROST  
RESISTANCE



RESISTANCE TO  
HIGH TEMPERATURES



HEAVY LOAD  
BEARING



HIGH MECHANICAL  
RESISTANCE

## Application Areas :



PATHS AND  
WALKWAYS



SWIMMING POOLS  
AND ADJACENT  
AREAS



TERRACES



PARKING AREAS,  
TRANSITABLE  
AREAS



BEACH  
ESTABLISHMENTS



PUBLIC PARKS  
AND GARDENS



STREET  
FURNISHINGS



INDUSTRIAL  
AREAS



## Duratech XT

600x1200 MM

### Aesthetic and Functional

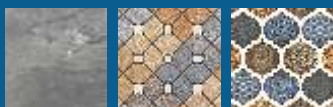
---

One of the most crucial factors in creating aesthetic and functional spaces is selecting materials that are appropriate for the environment. Floors, which are among the most commonly used components of outdoor spaces, play a key role in ensuring the space meets its intended needs.

Kajaria Duratech XT - Heavy Duty Vitrified Tiles are ideal for both interior and exterior spaces exposed to high loads and heavy pedestrian traffic. They combine elegance and durability while maintaining essential parameters such as surface hardness (Moh), water absorption, breaking strength (Mor), and load-bearing capacity. The Duratech XT series offers a broad range of applications, with each design reflecting true artistry. These tiles are suitable for various areas including pedestrian zones, vehicular pathways, terraces, seating areas, balconies, sunbathing roofs, verandas, seaside spots, beaches, swimming pools, sidewalks, airports, metro stations, train stations, industrial buildings, parking lots, underpasses, villa gardens, and educational buildings.

---

### Heavy Duty Outdoor Vitrified Tiles





BLUE STONE NATURAL



CEMENTO CREMA



CEMENTO ASH



CEMNETO NERO







GETAFE BEIGE



GETAFE GREY



HAMMER STONE BEIGE



HAMMER STONE GREY





CREEK WAVE NERO



HIMALAYA WHITE



HIMALAYA GREY



HIMALAYA BLACK





LIME STONE IVORY



LUCIDO GREY



MIAMI PEARL GREY



SAHARA CREMA



SAHARA GREY



SEA SAND BEIGE



SEA SAND GREY







**12mm**  
ULTRATHICK OUTDOOR VITRIFIED TILES

**<0.10**  
WATER ABSORPTION

## Features :



HIGHER  
THICKNESS



WATER ABSORPTION  
<0.10%



RECTIFIED



RESISTANT TO  
STAINS



ANTISLIP



HIGHLY UV  
RESISTANT



RESISTANT TO  
SCRATCHES



EASY TO  
CLEAN



FROST  
RESISTANCE



RESISTANCE TO  
HIGH TEMPERATURES



HEAVY LOAD  
BEARING



HIGH MECHANICAL  
RESISTANCE

## Application Areas :



PATHS AND  
WALKWAYS



SWIMMING POOLS  
AND ADJACENT  
AREAS



TERRACES



PARKING AREAS,  
TRANSITABLE  
AREAS



BEACH  
ESTABLISHMENTS



PUBLIC PARKS  
AND GARDENS



STREET  
FURNISHINGS



INDUSTRIAL  
AREAS

## Duratech XT

600x600 MM

### Aesthetic and Functional

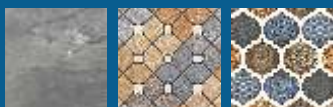
---

One of the most important conditions to create aesthetic and functional space is to choose materials suitable for the space. In particular, floors that are the mostly commonly used parts of the outdoor spaces are an important factor to ensure that the conditions in the space meet the needs.

Kajaria Duratech XT - Heavy Duty Vitrified Tiles can be safely used in all internal and external spaces that are exposed to high load and pedestrian traffic. They are a flawless blend of elegance and durability. Maintaining all the vital parameters namely surface hardness (Moh), water absorption, breaking strength (Mor), Load Bearing Capacity etc., the application base of Duratech XT series is wider, and its every design is a true reflection of art. They are safely used on Floor area like pedestrian traffic areas, vehicular movement areas, terraces, Seatout areas, balcony, roof sunbathing areas, veranda, seaside, beach, swimming pools, sidewalk, airport, metros, train stations, industrial buildings, parking lots, underpasses, villa gardens, educational buildings etc.

---

### Heavy Duty Outdoor Vitrified Tiles







K 7013



K 7015



K 7016



K 7017



K 7018



K 7019

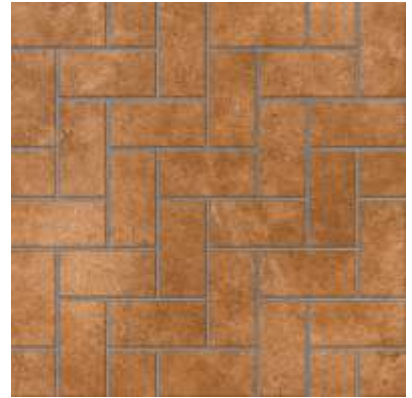




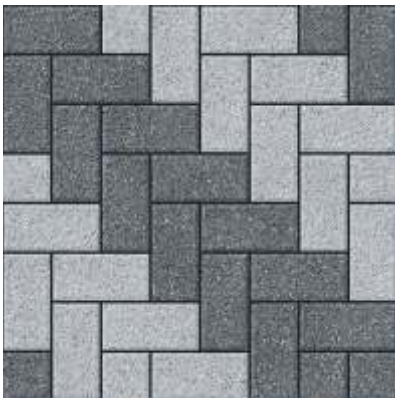
K 7032



K 7039



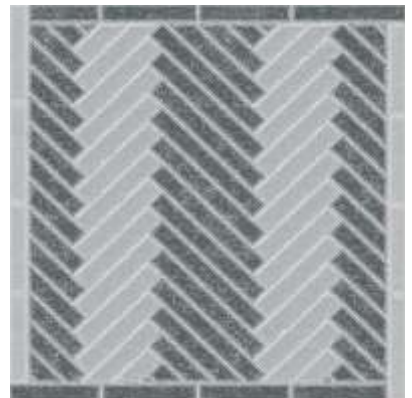
K 7040



K 7041



K 7042



K 7043



K 7044



K 7067



K 7094



K 7101



K 7102



K 7103



K 7104



K 7105



K 7106



K 7107



K 7108



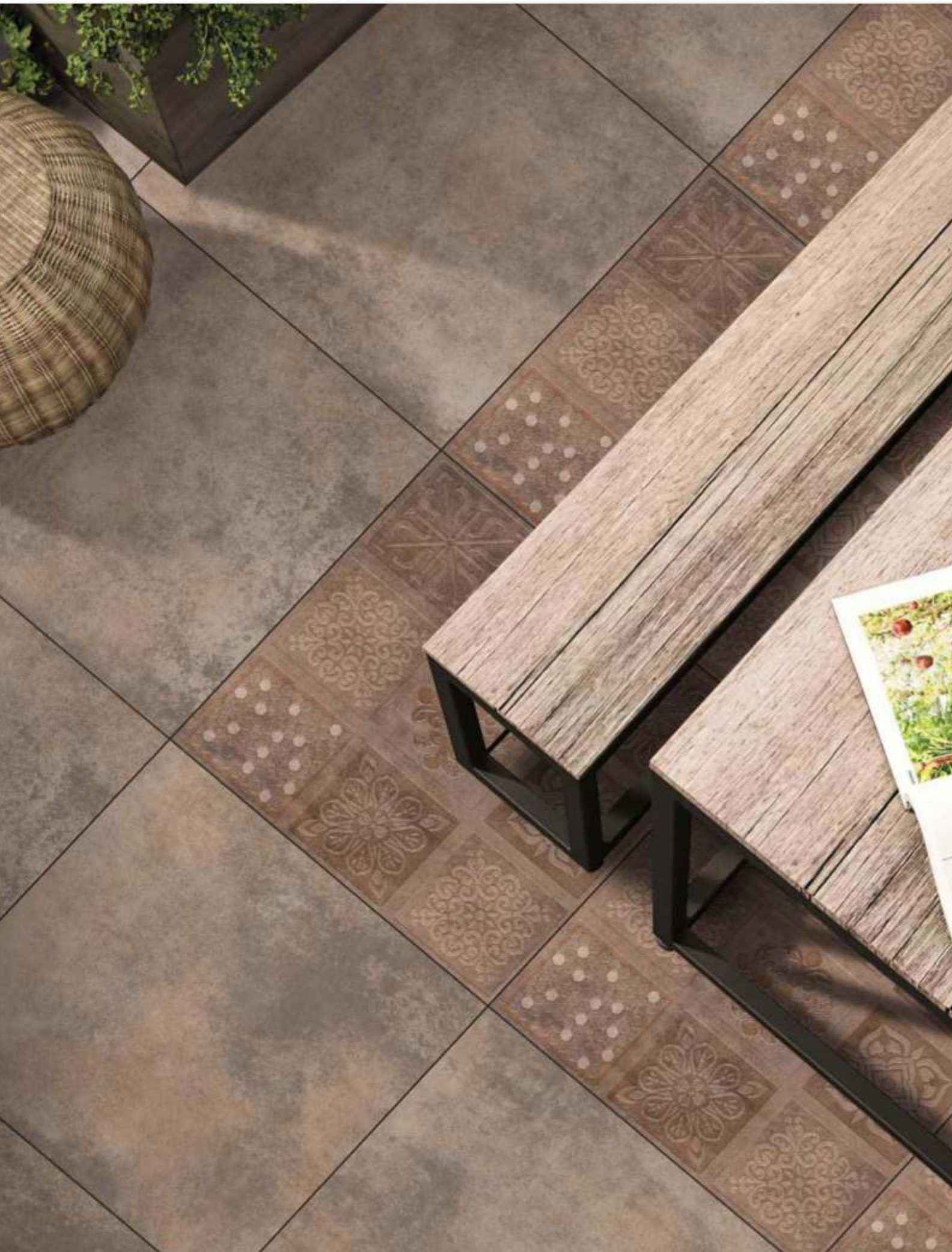
K 7109



K 7110



**Kajaria**







K 7111



K 7112



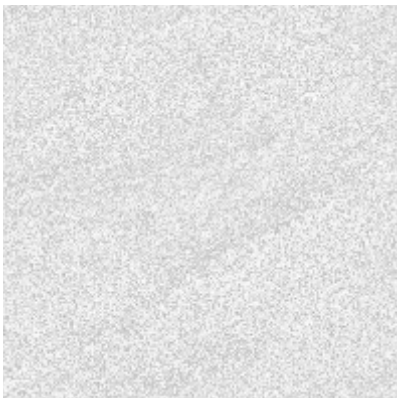
K 7113



K 7114



K 7115



K 7116



K 7117



K 7118



K 7119



K 7120

**Kajaria**







**12mm**  
ULTRATHICK OUTDOOR VITRIFIED TILES

**<0.10**  
WATER ABSORPTION

## Features :



HIGHER  
THICKNESS



WATER ABSORPTION  
<0.10%



RECTIFIED



RESISTANT TO  
STAINS



ANTISLIP



HIGHLY UV  
RESISTANT



RESISTANT TO  
SCRATCHES



EASY TO  
CLEAN



FROST  
RESISTANCE



RESISTANCE TO  
HIGH TEMPERATURES



HEAVY LOAD  
BEARING



HIGH MECHANICAL  
RESISTANCE

## Application Areas :



PATHS AND  
WALKWAYS



SWIMMING POOLS  
AND ADJACENT  
AREAS



TERRACES



PARKING AREAS,  
TRANSITABLE  
AREAS



BEACH  
ESTABLISHMENTS



PUBLIC PARKS  
AND GARDENS



STREET  
FURNISHINGS



INDUSTRIAL  
AREAS



## Duratech

400x400 MM

## Aesthetic and Functional

---

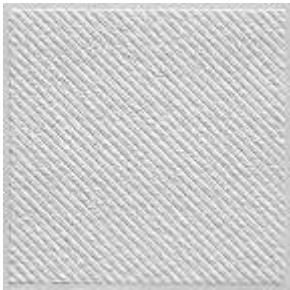
One of the most important conditions to create aesthetic and functional space is to choose materials suitable for the space. In particular, floors that are the mostly commonly used parts of the outdoor spaces are an important factor to ensure that the conditions in the space meet the needs.

Kajaria Duratech - Heavy Duty Vitrified Tiles can be safely used in all internal and external spaces that are exposed to high load and pedestrian traffic. They are a flawless blend of elegance and durability. Maintaining all the vital parameters namely surface hardness (Moh), water absorption, breaking strength (Mor), Load Bearing Capacity etc., the application base of Duratech series is wider, and its every design is a true reflection of art. They are safely used on Floor area like pedestrian traffic areas, vehicular movement areas, terraces, Seatout areas, balcony, roof sunbathing areas, veranda, seaside, beach, swimming pools, sidewalk, airport, metros, train stations, industrial buildings, parking lots, underpasses, villa gardens, educational buildings etc.

---

## Heavy Duty Outdoor Vitrified Tiles

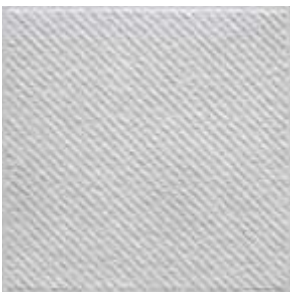




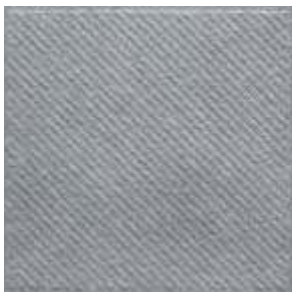
4011 A



4012 A



4013 B



4014 B



4016 B



4017 C ■



4018 C ■



4019 C ■



4021 E



4022 E



4023 E



***Kajaria***





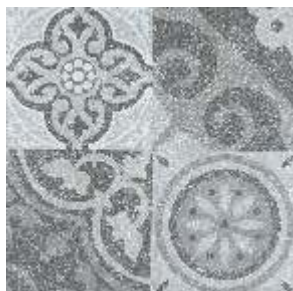
**Kajaria**



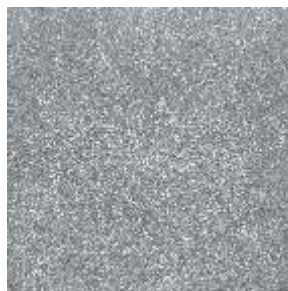




4024 F



4024 F-HL



4025 F



4030 H ■



4031 H ■



4032 H ■



4036 J



4037 J



4038 J



4040 K



4041 L



4043 M



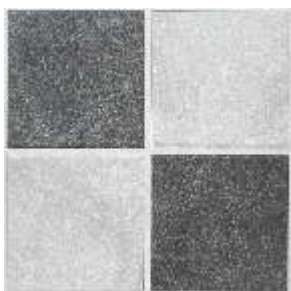
4044 M



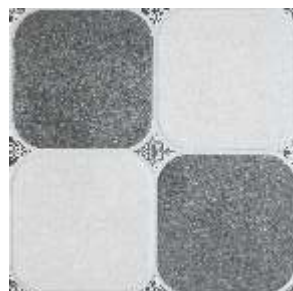
4049 P



4050 P



4052 Q ■



4053 R



4054 R



4055 S



4056 S





4059 T



4060 U



4061 U





**Kajaria**







K 4066 V ■■



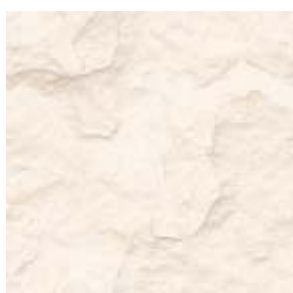
K 4067 V ■■



K 4072 Z



K 4074 Z



K 4077 AC



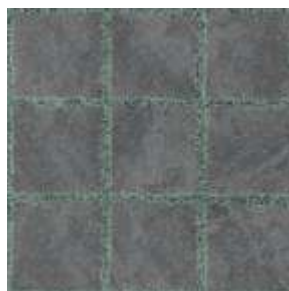
K 4078 AC



K 4079 AD



K 4081 AE



K 4082 AE



K 4083 AF



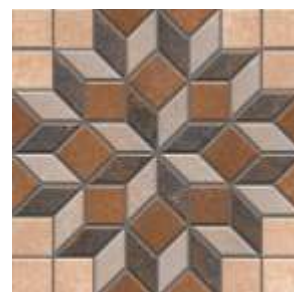
K 4086 AI



K 4087 AJ



K 4088 AK



K 4090 AM





K 4091 AN



K 4092 AO



K 4093 AP



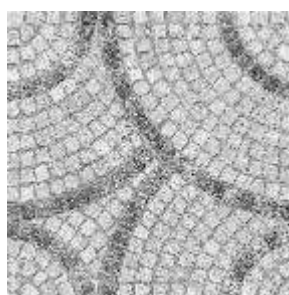
K 4094 AQ



K 4096 AR



K 4098 AS



K 4099 AS



K 4100 AT



K 4101 AT



K 4102 AT



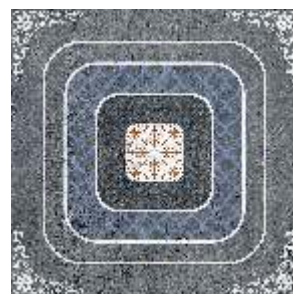
K 4103 AU



K 4104 AV



K 4104 AV HL



K 4105 AW









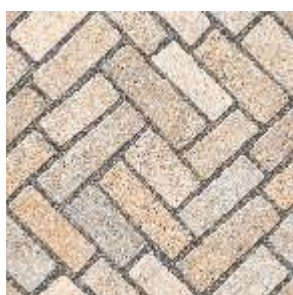
K 4106 AX



K 4107 AX



K 4108 AY



K 4109 AY



K 4110 AY



K 4111 AZ



K 4112 BA



K 4113 BB



K 4114 BB



K 4115 BC



K 4116 BC



K 4117 BC



K 4118 BC









DEPTH UP TO  
05mm



THICKNESS  
9.3 mm



WATER  
RESISTANCE

## Duratech Cladding

300x450 MM

### Exploring World's Best Collection

---

The Kajaria's collection carefully addresses the aesthetic and functional requirements of contemporary architecture by creating unique, coherent and personalised settings.

The particular size 30x45cm and the rectified edges create walls characterized by a tuning visual continuity, which makes the vibrant colors and the effect of these brilliant ceramic surfaces even more precious. The typical vibrant veins found in this resistant stone transmit a unique character to the decoration.

---

### High Depth Cladding Tiles







K 34005-B



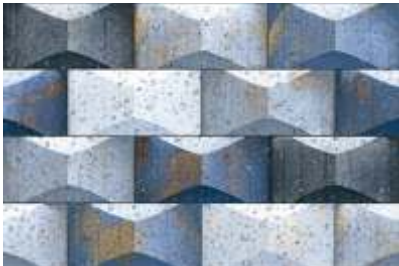
K 34011-C



K 34015-D



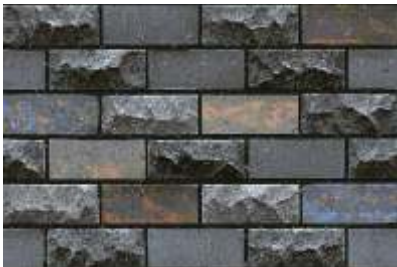
K 34017-E



K 34018-F



K 34019-G



K 34020-G



K 34021-G



K 34022-H



K 34026-I



K 34029-J



K 34030-J



K 34035-L



K 34036-L









K 34037-M



K 34038-M



K 34039-M



K 34041-N



K 34042-N



K 34043-O



K 34044-O



K 34045-P



K 34045-P HL



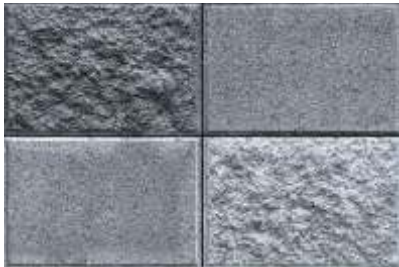
K 34046-P



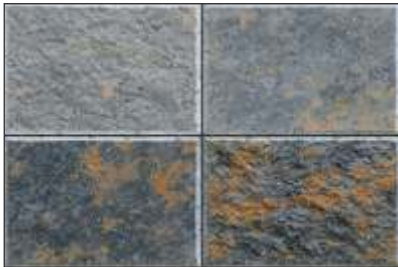
K 34047-P



K 34048-P



K 34050-Q



K 34051-Q



K 34053-R



K 34054-R



K 34055-R



K 34056-S



K 34057-S







## TECHNICAL SPECIFICATION DURATECH 300X450MM | 10MM (HIGH DEPTH CLADDING TILES)

S.No.	CHARACTERISTIC	GROUP BIB : ISO 13006 - 2018	GROUP BIB IS :15622:2017	KAJARIA VITRO VALUE	TEST ACCORDING TO
<b>Dimensions &amp; surface Quality</b>					
1.	Deviation in length and width	± 0.3%	± 0.1%	± 0.1%	ISO 10545:2/IS13630 (P-1)
2.	Deviation in thickness	± 5%	± 5%	± 4%	ISO 10545:2/IS13630 (P-1)
3.	Deviation in Staightness of sides	± 0.3%	± 0.1%	± 0.1%	ISO 10545:2/IS13630 (P-1)
4.	Deviation in Rectangulrity	± 0.3%	± 0.1%	± 0.1%	ISO 10545:2/IS13630 (P-1)
5.	Deviation in Surface Flatness	± 0.4%	± 0.50%	± 0.3%	ISO 10545:2/IS13630 (P-1)
6.	Surface Quality (%)	Minimum 95%	Minimum 95%	No visible defects	ISO 10545:2/IS13630 (P-1)
7.	Glossiness with Nano	Declared by manufacturer		Avg. 5	ISO 2813 (Glossy meter)
<b>Physical charactersitics</b>					
8.	Scratch Hardness of surface Moh's scale	Required	Min. 5	Min. 6	IS:13630 (P-13)
9.	Water absorption	0.5% < Ev ≤ 3% Individual maximum 33%	Avg 0.08% < E ≤ 3% Individual maximum 33%	Avg 1 %	ISO 10545:3/IS: 13630 (P-2)
10.	Moisture Expansion	Test method available	Max 0.02 mm/m	Max 0.01 mm/m	ISO 10545:10 / IS:13630(P-3)
11.	Surface abrasion	Required	Min Class - 2	PASS : CLASS - 4	ISO 10545:7/IS13630 (P-11)
<b>Mechanical charactersitics</b>					
12.	Breaking strength	> 1100 N	Min 1100 N	≥ 1500 N	ISO 10545:4/IS: 13630 (P-6)
13.	Modulus of rupture	>30 N/mm <sup>2</sup>	Average 30,Individual minimum 27N	≥ 38 N/mm <sup>2</sup>	ISO 10545:4/IS: 13630 (P-6)
<b>Safety charactersitics</b>					
14.	Impact resistance (Coefficient of restitution)	Test method available	Min 0.55	> 0.55	ISO 10545:5/IS: 13630 (P-14)
<b>Thermo photo charactersitics</b>					
15.	Thermal shock resistance	Test method available	Min 10 cycles	Pass min 10 cycles	ISO 10545:9/IS: 13630 (P-5)
16.	Co efficient of thermal expansion	Test method available	7×10 <sup>-6</sup> Max	<6×10 <sup>-6</sup>	ISO 10545:8/IS:13630 (P-4)
17.	Crazing Resistance	Required	4 Cycle Pass	PASS : 5 cycle	ISO 10545:11/IS:13630 (P-9)
18.	Frost resistance	Required	Required	No Damage	ISO 10545:12/IS: 13630 (P-10)
19.	Small colour differences	Plain coloured tiles only where required ΔEcmc < 0.75	-	No differences	ISO 10545:16
<b>Chemical characteristics charactersitics</b>					
20.	Stain Resistance	Min Class - 3	Min class - 1	Min conform to class-4'	ISO 10545:14/IS:13630 (P-8)
21.	Chemical Resistance HOUSE HOLD CHEMICAL & SWIMMING POOL SALT	Min class-GB	Class - AA	Conform to classes-GA'	ISO 10545:13/IS:13630 (P-8)
22.	Chemical Resistance LOW CONCENTRATIONS ACID & ALKALIES	Manufacturer is to state classification	Required	Conform to classes-GLA'	ISO 10545:13/IS:13630 (P-8)
23.	Chemical Resistance HIGH CONCENTRATIONS ACID & ALKALIES	Test method available	Required	Conform to classes-GHB'	ISO 10545:13/IS:13630 (P-8)

## PACKING DETAILS

S. No.	Dimensions ( mm)	No. of tiles / box	Coverage Area
1.	300x450mm   10mm	5 Pcs.	0.675 sqm

\* KAJARIA DURatech CLADDING TILES have resistance to most of the stains/chemicals but it is recommended to take due care while laying and for day-to-day maintenance.

\* Resistance to acids & alkalies (Exception Hydrofluoric acids & its Compounds)

\* Colours in the catalogue are as accurate as printing process allows. Please check actual sample before making the final selection

\* Sizes mentioned in the catalogue are nominal sizes only.

\* No claim will be entertained once the KAJARIA DURatech CLADDING TILES are fixed.

\* For better laying. Please follow the instructions on the packaging box.

\* Please make sure to check the shade/finish with the sales agent/ dealer making the final purchase because there might be variation in actual finish that shown in the catalogue. The company will not bear any loss in such case.



→ **12mm**  
ULTRATHICK OUTDOOR VITRIFIED TILES

#### TECHNICAL SPECIFICATION 600x600MM | 400x400MM / 12MM DURATECH

S.No.	PROPERTY	GROUP BIA - ISO 13006/EN-176	GROUP BIA IS :15622:2017	OUR VALUE	TEST ACCORDING TO
<b>Dimensions &amp; surface Quality</b>					
1.	Deviation in length and width	± 0.6%	± 0.1%	± 0.1%	ISO 10545-2/IS:13630 (P-1)
2.	Deviation in thickness	± 5%	± 5%	± 4%	ISO 10545-2/IS:13630 (P-1)
3.	Deviation in Straightness of sides	± 0.5%	± 0.1%	± 0.1%	ISO 10545-2/IS:13630 (P-1)
4.	Deviation in Rectangularity	± 0.5%	± 0.1%	± 0.1%	ISO 10545-2/IS:13630 (P-1)
5.	Deviation in Surface Flatness	± 0.5%	± 0.5%	± 0.2%	ISO 10545-2/IS:13630 (P-1)
6.	Surface Quality (%)	Minimum 95%	Minimum 95%	No visible defects	ISO 10545-2/IS:13630 (P-1)
<b>Physical characteristics</b>					
7.	Scratch Hardness of surface Moh's scale	Required	Min. 5	6	EN-101/IS:13630 (P-13)
8.	Water absorption	≤0.5%	Averages 0.08, Individual maximum 0.1%	<0.1%	ISO 10545-3/IS: 13630 (P-2)
9.	Moisture Expansion, in mm/m	Nil	0.02, Max	Nil	ISO 10545-10
10.	Surface Abrasion Resistance	As per Mfg.	Min Class 2	Min. Class-4	ISO 10545-7
<b>Mechanical characteristics</b>					
11.	Breaking strength	1300 N	Min 1300 N	>3000N	ISO 10545-4/IS: 13630 (P-6)
12.	Modulus of rupture	>35 N/mm <sup>2</sup>	Average 35, Individual minimum 32	≥40 N/mm <sup>2</sup>	ISO 10545-4/IS: 13630 (P-6)
13.	Impact resistance	Declared by manufacturer	0.55, Min	Min. 0.55	ISO 10545-5/IS:13630 (P-14)
<b>Safety characteristics</b>					
14.	Density	Required	Min 2.20 gm/cc	2.30 gm/cc	DIN 51082/IS: 13630 (P-2)
15.	Skid resistance (Friction coefficient)	≥0.4	-	≥0.5	ISO 10545-17
<b>Thermo photo characteristics</b>					
16.	Thermal shock resistance	Resistant to 10 cycles	Min 10 cycles	Pass min 10 cycles	ISO 10545-9/IS: 13630 (P-5)
17.	Co efficient of thermal expansion	9×10 <sup>-6</sup> K <sup>-1</sup> Max	6×10 <sup>-6</sup> K <sup>-1</sup> Max	<6×10 <sup>-6</sup> K <sup>-1</sup> Max	ISO 10545-8/IS:13630 (P-4)
18.	Frost resistance	Resistant	Required	Resistant	ISO 10545-12/IS: 13630 (P-10)
19.	Crazing Resistance	As per Mfg.	-	Min 10 cycles	ISO 10545-11
<b>Chemical characteristics</b>					
20.	Stain Resistance	Min class-3	Required	Min conform to class-4*	ISO 10545-14
21.	Chemical Resistance HOUSE HOLD CHEMICAL & SWIMMING POOL SALT	min class-UB	Required	Conform to classes-UA*	ISO 10545-13/IS:13630 (P-7)
22.	Chemical Resistance LOW CONCENTRATIONS ACID & ALKALIES	min class-ULB	Required	Conform to classes-ULA*	ISO 10545-13/IS:13630 (P-7)
23.	Chemical Resistance HIGH CONCENTRATIONS ACID & ALKALIES	min class-UHB	Required	Conform to classes-UHA*	ISO 10545-13/IS:13630 (P-7)

#### PACKING DETAILS

DIMENSIONS (MM)	NO. OF TILES / BOX	COVERAGE AREA
600x1200	2 Pcs.	1.44 sqm.
600x600	3 Pcs.	1.08 sqm.
400x400	5 Pcs.	0.80 sqm.

- \* KAJARIA DURatech CLADDING TILES have resistance to most of the stains/chemicals but it is recommended to take due care while laying and for day-to-day maintenance.
- \* Resistance to acids & alkalies (Exception Hydrofluoric acids & its Compounds)
- \* Colours in the catalogue are as accurate as printing process allows. Please check actual sample before making the final selection
- \* Sizes mentioned in the catalogue are nominal sizes only.
- \* No claim will be entertained once the KAJARIA DURatech TILES are fixed.
- \* For better laying. Please follow the instructions on the packaging box.
- \* Please make sure to check the shade/finish with the sales agent/ dealer making the final purchase because there might be variation in actual finish that shown in the catalogue. The company will not bear any loss in such case.





### Technical Specification POLISHED VITRIFIED TILES (1000x1000 Solitaire Plus)

S. No.	PROPERTY	GROUP BIA ISO 13006/EN-176	GROUP BIA IS :15622:2017	KAJARIA VITRO VALUE	TEST ACCORDING TO
Dimensions & surface Quality					
1.	Deviation in length and width	± 0.6%	± 0.1%	± 0.1%	ISO 10545:2/IS:13630 (P-1)
2.	Deviation in thickness	± 5%	± 5%	± 4%	ISO 10545:2/IS:13630 (P-1)
3.	Deviation in Straightness of sides	± 0.5%	± 0.1%	± 0.1%	ISO 10545:2/IS:13630 (P-1)
4.	Deviation in Rectangularity	± 0.5%	± 0.1%	± 0.1%	ISO 10545:2/IS:13630 (P-1)
5.	Deviation in Surface Flatness	± 0.5%	± 0.5%	± 0.2%	ISO 10545:2/IS:13630 (P-1)
6.	Surface Quality (%)	Minimum 95%	Minimum 95%	No visible defects	ISO 10545:2/IS:13630 (P-1)
7.	Glossiness with Nano	Declared by manufacturer	-	Minimum 90	ISO 2813 (Glossy meter)
Physical charactersitics					
8.	Scratch Hardness of surface Moh's scale	Required	Min. 5	Min. 5	EN-101/IS:13630 (P-13)
9.	Water absorption	≤ 0.5%	Averages 0.08, Individual maximum 0.1%	<0.5%	ISO 10545:3/IS: 13630 (P-2)
10.	Moisture Expansion	Nil	0.02, Max	Nil	ISO 10545:10
11.	Deep Abrasion	max 175 mm <sup>3</sup>	Max 140 mm <sup>3</sup>	≤ 140mm <sup>3</sup>	ISO 10545:6/IS:13630 (P-12)
Mechanical charactersitics					
12.	Breaking strength	1300 N	Min 1300 N	≥ 3000 N	ISO 10545:4/IS: 13630 (P-6)
13.	Modulus of rupture	>35 N/mm <sup>2</sup>	Average 35, Individual minimum 32	≥ 40 N/mm <sup>2</sup>	ISO 10545:4/IS: 13630 (P-6)
Safety charactersitics					
14.	Density	Required	Min 2.20 gm/cc	2.34 gm/cc	DIN 51082/IS: 13630 (P-2)
15.	Skid resistance (Friction coeeficient	≥ 0.4	-	≥ 0.4	ISO 10545:17
Thermo photo charactersitics					
16.	Thermal shock resistance	Resistant to 10 cycles	Min 10 cycles	Pass min 10 cycles	ISO 10545:9/IS: 13630 (P-5)
17.	Co efficient of thermal expansion	9×10 <sup>-6</sup> /K <sup>-1</sup> Max	6×10 <sup>-6</sup> /K <sup>-1</sup> Max	<6× <sup>-6</sup> -6K <sup>-1</sup> Max	ISO 10545:8/IS:13630 (P-4)
18.	Frost resistance	Resistant	Required	Resistant	ISO 10545:12/IS: 13630 (P-10)
19.	Color Resistance to UV light	Resistant	-	Resistant	DIN 51094
Chemical characteristics charactersitics					
20.	Stain Resistance	Min class-3	Required	Min conform to class-4*	ISO 10545:14
21.	Chemical Resistance HOUSE HOLD CHEMICAL & SWIMMING POOL SALT	Min class-UB	Required	Conform to classes-UA*	ISO 10545:13/IS:13630 (P-7)
22.	Chemical Resistance LOW CONCENTRATIONS ACID & ALKALIES	Min class-ULB	Required	Conform to classes-ULA*	ISO 10545:13/IS:13630 (P-7)
23.	Chemical Resistance HIGH CONCENTRATIONS ACID & ALKALIES	Min class-UHB	Required	Conform to classes-UHA*	ISO 10545:13/IS:13630 (P-7)

### PACKING DETAILS

S. No.	Dimensions ( mm)	No. of tiles / box	Coverage Area
1.	1000x1000	2 Pcs.	2.00 Sq. Mtr.

\* Vitrified tiles have resistance to most of the stains/chemicals but, it is recommended to take due care while laying and for day-to-day maintenance.

# Resistance to acids & alkalies (Exception Hydrofluoric Acids & its Compounds)

1. Colours in the catalog are as accurate as printing process allows

2. Sizes mentioned in the catalog are the nominal sizes only.

3. Conforming to ISO requirements, technical specifications for Kalaria tiles are applicable only for 1st quality tiles.

4. Please inspect all tiles prior to installation; company will not entertain complaints, once tiles are laid / fixed.

5. For better laying, please follow the instructions on the packaging box.



## TECHNICAL SPECIFICATION - POLISHED VITRIFIED TILES

S. No.	Property	Group B1a - ISO 13006 / EN - 176	Group B1a IS : 15622 : 2017	Our Value	Test According to
<b>Dimensions &amp; surface Quality</b>					
1.	Deviation in length and width	± 0.6%	± 0.1%	± 0.1%	ISO 10545:2/IS:13630 (P-1)
2.	Deviation in thickness	± 5%	± 5%	± 4%	ISO 10545:2/IS:13630 (P-1)
3.	Deviation in Straightness of sides	± 0.5%	± 0.1%	± 0.1%	ISO 10545:2/IS:13630 (P-1)
4.	Deviation in Rectangularity	± 0.5%	± 0.1%	± 0.1%	ISO 10545:2/IS:13630 (P-1)
5.	Deviation in Surface Flatness	± 0.5%	± 0.5%	± 0.2%	ISO 10545:2/IS:13630 (P-1)
6.	Surface Quality (%)	Minimum 95%	Minimum 95%	No visible defects	ISO 10545:2/IS:13630 (P-1)
7.	Glossiness with Nano	Declared by manufacturer	-	Minimum 90%	ISO 2813 (Glossy meter)
<b>Physical characteristics</b>					
8.	Scratch Hardness of surface Moh's scale	Required	Min. 5	Min. 6	EN-101/IS:13630 (P-13)
9.	Water absorption	≤0.5%	Averages 0.08, Individual Maximum, 0.1%	≤0.05%	ISO 10545:3/IS:13630 (P-2)
10.	Moisture Expansion	Nil	0.02, Max	Nil	ISO 10545:10
11.	Deep Abrasion	max 175 mm <sup>3</sup>	max 140 mm <sup>3</sup>	≤ 140mm <sup>3</sup>	ISO 10545:6/IS:13630 (P-12)
<b>Mechanical characteristics</b>					
12.	Breaking strength	1300 N	Min 1300N	≥1700N	ISO 10545:4/IS:13630 (P-6)
13.	Modulus of rupture	≥35 N/mm <sup>2</sup>	Averages 35 Individual Minimum 32	≥35 N/mm <sup>2</sup>	ISO 10545:4/IS:13630 (P-6)
<b>Safety characteristics</b>					
14.	Density	Required	Min 2.20 gm/cc	2.34 gm/cc	DIN 51082/IS:13630 (P-2)
15.	Skid resistance (Friction Co efficient)	≥0.4	-	≥0.4	ISO 10545:17
<b>Thermo photo characteristics</b>					
16.	Thermal shock resistance	Resistant to 10 cycles	Min 10 Cycles	Pass min 10 cycles	ISO 10545:9/IS:13630 (P-5)
17.	Coefficient of thermal expansion	9×10 <sup>-6</sup> K <sup>-1</sup> Max	6×10 <sup>-6</sup> K <sup>-1</sup> Max	<6×10 <sup>-6</sup> K <sup>-1</sup> Max	ISO 10545:8/IS:13630 (P-4)
18.	Frost resistance	Resistant	Required	Need to comply with the standard	ISO 10545:12/IS:13630 (P-10)
19.	Color Resistance to UV light	Resistant	-	Resistant	DIN 51094
<b>Chemical characteristics characteristics</b>					
20.	Stain Resistance	Min class-3	Required	Min conform to class-4	ISO 10545:14
21.	Chemical Resistance HOUSE HOLD CHEMICAL & SWIMMING POOL SALT	min class-UB	Required	Conform to classes-UA	ISO 10545:13/IS:13630 (P-7)
22.	Chemical Resistance LOW CONCENTRATIONS ACID & ALKALIES	min class-ULB	Required	Conform to classes-U LA	ISO 10545:13/IS:13630 (P-7)
23.	Chemical Resistance HIGH CONCENTRATIONS ACID & ALKALIES	min class-ULB	Required	Conform to classes-UHA	ISO 10545:13/IS:13630 (P-7)

## PACKING DETAILS

S. No.	Dimensions ( mm)	No. of tiles / box	Coverage Area
1.	800x1600	2 Pcs.	2.56 Sq. Mtr.
2.	600x1200	2 Pcs.	1.44 Sq. Mtr.
3.	800x800	3 Pcs.	1.92 Sq. Mtr.
4.	600x600	4 Pcs.	1.44 Sq. Mtr.

\* Vitrified tiles have resistance to most of the stains/chemicals but, it is recommended to take due care while laying and for day-to-day maintenance.

# Resistance to acids & alkalies (Exception Hydrofluoric Acids & its Compounds)

- Colours in the catalog are as accurate as printing process allows
- Sizes mentioned in the catalog are the nominal sizes only.
- Conforming to ISO requirements, technical specifications for Kajaria tiles are applicable only for 1st quality tiles.
- Please inspect all tiles prior to installation; company will not entertain complaints, once tiles are laid / fixed.
- For better laying, please follow the instructions on the packaging box.



## TECHNICAL SPECIFICATION - FULL BODY VITRIFIED TILES

S. No.	Property	Group Bla - ISO 13006/EN-176	Group Bla IS : 15622:2017	Our Value	Test According to
Dimensions & surface Quality					
1.	Deviation in length and width	± 0.6%	± 0.1%	± 0.1%	ISO 10545:2/IS:13630 (P-1)
2.	Deviation in thickness	± 5%	± 5%	± 4%	ISO 10545:2/IS:13630 (P-1)
3.	Deviation in Straightness of sides	± 0.5%	± 0.1%	± 0.1%	ISO 10545:2/IS:13630 (P-1)
4.	Deviation in Rectangularity	± 0.5%	± 0.1%	± 0.1%	ISO 10545:2/IS:13630 (P-1)
5.	Deviation in Surface Flatness	± 0.5%	± 0.5%	± 0.2%	ISO 10545:2/IS:13630 (P-1)
6.	Surface Quality (%)	Minimum 95%	Minimum 95%	No visible defects	ISO 10545:2/IS:13630 (P-1)
Physical characteristics					
7.	Scratch Hardness of surface Moh's scale	Required	Min. 5	Min. 5	EN-101/IS:13630 (P-13)
8.	Water absorption	≤0.5%	Averages 0.08, Individual maximum, 0.1%	≤0.05%	ISO 10545:3/IS: 13630 (P-2)
9.	Moisture Expansion	Nil	0.02 Max	Nil	ISO 10545:10
10.	Deep Abrasion	max 175 mm <sup>3</sup>	max 140 mm <sup>3</sup>	≤ 140 mm <sup>3</sup>	ISO 10545:6/IS:13630 (P-12)
Mechanical characteristics					
11.	Breaking strength	1300 N	Min 1300	≥ 2000N	ISO 10545:4/IS: 13630 (P-6)
12.	Modulus of rupture	≥ 35 N/mm <sup>2</sup>	Average 35, Individual minimum 32	≥ 35 N/mm <sup>2</sup>	ISO 10545:4/IS: 13630 (P-6)
Safety characteristicsDensity					
13.	Density	Required	Min 2.20 gm/cc	2.34 gm/cc	DIN 51082/IS: 13630 (P-2)
14.	Skid resistance (Friction coefficient)	≥ 0.4	-	≥ 0.4	ISO 10545:17
Thermo photo characteristics					
15.	Thermal shock resistance	Resistant to 10 cycles	Min 10 cycles	Pass min 10 cycles	ISO 10545:9/IS: 13630 (P-5)
16.	Co efficient of thermal expansion	9×10 <sup>-6</sup> K <sup>-1</sup> Max	6×10 <sup>-6</sup> K <sup>-1</sup> Max	<6×10 <sup>-6</sup> K <sup>-1</sup> Max	ISO 10545:8/IS:13630 (P-4)
17.	Frost resistance	Resistant	Required	Resistant	ISO 10545:12/IS: 13630 (P-10)
18.	Color Resistance to UV light	Resistant	-	Resistant	DIN 51094
Chemical characteristics characteristics					
19.	Stain Resistance	Min Class 3	Required	Min conform to class 4	ISO 10545:14
20.	Chemical Resistance HOUSE HOLD CHEMICAL & SWIMMING POOL SALT	min class-UB	Required	Conform to classes-UA	ISO 10545:13/IS:13630 (P-7)
21.	Chemical Resistance LOW CONCENTRATIONS ACID & ALKALIES	min class-ULB	Required	Conform to classes-ULA	ISO 10545:13/IS:13630 (P-7)
22.	Chemical Resistance HIGH CONCENTRATIONS ACID & ALKALIES	min class-UHB	Required	Conform to classes-UHA	ISO 10545:13/IS:13630 (P-7)

## PACKING DETAILS

S. No.	Dimensions ( mm)	No. of tiles / box	Coverage Area
1.	800x1600	2 Pcs.	2.56 Sq. Mtr.
2.	600x1200	2 Pcs.	1.44 Sq. Mtr.
3.	600x600	4 Pcs.	1.44 Sq. Mtr.

\* Vitrified tiles have resistance to most of the stains/chemicals but, it is recommended to take due care while laying and for day-to-day maintenance.

# Resistance to acids & alkalies (Exception Hydrofluoric Acids & its Compounds)

1. Colours in the catalog are as accurate as printing process allows

2. Sizes mentioned in the catalog are the nominal sizes only.

3. Conforming to ISO requirements, technical specifications for Kajaria tiles are applicable only for 1st quality tiles.

4. Please inspect all tiles prior to installation; company will not entertain complaints, once tiles are laid / fixed.

5. For better laying, please follow the instructions on the packaging box.

## NORTH

### CHANDIGARH

SCO- 45-46-47, first floor, sector-17A,  
opp. Taj Hotel, Chandigarh-160017  
Phone : 0172- 4631419 / 16  
Mobile : 9501001163

### DEHRADUN

International Trade Tower, 1 Old Survey Road,  
Adjoining Rajpur Road,, Near Cross Road Mall  
Dehradun - 248001, Uttarakhand  
Mobile : 97600 40499

### JAIPUR

First Floor, Nidhi Kamal Tower, Plot No 37-38 B,  
Barwara House, Ajmer Road,Jaipur - 302006, Rajasthan  
Phone : 0141-3568640  
Mobile : 99290 22124

### LUDHIANA

Upper Ground Floor, Sandhu Tower-2,  
Gurdev Nagar, Ferozpur Road, Ludhiana - 141001, Punjab  
Phone : +91-161-4062909  
Mobile : 9779021257

### LUCKNOW

529 GHA/06, Kanchana Bihari Marg,  
Near Jagrani Hospital, Ring Road  
Lucknow - 226016 (U.P)  
Mobile : 9793299660, 8128243886

### JAMMU

1st Floor, Bachithar Complex Sector-7,  
Channi Himmat, Jammu,  
Jammu And Kashmir 180015

## EAST

### KOLKATA (Regional office)

Tirupati Plaza, 2nd Floor, 74/2, A.J.C.Bose Road,  
Opp to Jora Girja,  
Kolkata - 700 016 (West Bengal)  
Mobile: 9007011023

### PATNA (Regional office)

'ANCHAL', House No - 15, Ground Floor  
Justice Narayan Path, Nageswar Colony,  
Patna - 800001, Bihar  
Mobile: 7781005449

## WEST

### MUMBAI

B1-307, BOOMERANG, Chandivali Farm Road,  
Near Chandivali Studio, Off Saki-Vihar Road,  
Andheri (E) Mumbai - 400072, (Maharashtra)  
Mobile : 9987753947,9987753948

### PUNE

601-A, D.S.K. Gandharv Heights,  
Ganesh Khind Road, Shivaji Nagar,  
Pune - 411005, (Maharashtra)  
Mobile : 9730081546

### AHMEDABAD (Regional office)

Office No. 504, City Centre-2, 5th Floor,  
Nr. Sukan Mall Cross Road,  
Science City Road, SoJa, Ahmedabad -380060  
Mobile :9724340890

## CENTRAL

### RAIPUR

1st Floor, Maharaja Plaza, Near Wholesale  
Fruit Market, Dhamtari Road, Laalpur  
Raipur-492001, Chhattisgarh  
Mobile : 9752598469

### INDORE (Regional office)

S.A. Tower, 1st Floor, 13/3 New Palasia,  
Opp. Arya Samaj Building, Indore, 452001  
Mobile: 9752593468

## SOUTH

### BANGALORE

Farah Icon, 119 First Floor  
Opp. New Pass Port Kendra, Lalbagh Road,  
Bangalore – 560 027, (Karnataka)  
Mobile : 900840 2940, 900840 2922  
9008957861

### CHENNAI

No.162, Metro Plazo, Anna Salai,  
Opp. Spencer Plaza Mall, Chennai - 600 002  
Ph: 044-4858 4990 / 4858 4991  
Mobile. : 9003077099, 9599194842,  
9003075275

### COCHIN

MN Square, 1st Floor  
549/2, Near Gold Souk Grande  
NH Bypass, Vyttila, Cochin- 19, (Kerala)  
Mobile : 9746474732, 9746474733

### COIMBATORE

First Floor , No.57, Cowley Brown Road,  
R.S Puram, Coimbatore - 641002, (Tamil Nadu)  
Mobile : 9003325075, 9003842142

### HYDERABAD

Keerthi & Pride Towers, House No. 8-2-120/86/1&2,  
3rd Floor, plot No.11 & 12, Road No.2, Banjara Hills  
Hyderabad-500034, (Telangana)  
Mobile : 9000005385

## SALES REPRESENTATIVE

## NORTH

**AGRA :**  
Mobile : 9760045574

**ALLAHABAD :**  
Mobile : 9773983600

**BHATINDA :**  
Mobile : 9501001162

**DELHI / FARIDABAD / GURGAON :**  
Mobile : 9717795123

**GORAKHPUR :**  
Mobile : 8009407878

**HALDWANI :**  
Mobile : 9760098112

**JALANDHAR :**  
Mobile : 9779021261

**JODHPUR :**  
Mobile : 9001094759

**KANPUR :**  
Mobile : 9773983602

**GHAZIABAD/ NOIDA :**  
Mobile : 9810010240

**ROHTAK / HISSAR / REWARI :**  
Mobile : 9717795118

### SHIMLA

Mobile : 9501001163

**UDAIPUR :**  
Mobile : 9001092597

**VARANASI :**  
Mobile : 9794865554

## EAST

**BIHAR :**  
Mobile : 7781005449

**JHARKHAND :**  
Mobile : 9938234060

**NORTH EAST**  
Mobile : 9007372220

**WEST BANGAL**  
Mobile : 9007011023

**ODISHA**  
Mobile : 9937571222

## SOUTH

**CALICUT:**  
Mobile : 9746117422

**KANNUR :**  
Mobile : 9746474736

**HUBLI :**  
Mobile : 9008278672

**MADURAI :**  
Mobile : 9843731240

**MANGALORE :**  
Mobile : 9008402944

**SALEM :**  
Mobile : 9003842142

**TRIVANDURM :**  
Mobile : 9746474735

**TRICHY :**  
Mobile : 9840284411

**THRISSUR :**  
Mobile : 9746474734

**VIJAYAWADA :**  
Mobile : 9000302776

**VISAKHAPATNAM :**  
Mobile : 9000005387

**TIRUPATI :**  
Mobile : 9701451286

## WEST

**AURANGABAD :**  
Mobile : 8600992618

**KOLHAPUR :**  
Mobile : 8600992617

**NASIK :**  
Mobile : 9730081553

**NAGPUR :**  
Mobile : 7755904583

**GOA :**  
Mobile : 7757032203

**SURAT :**  
Mobile : 9724340890

**BARODA :**  
Mobile : 9205897978

## CENTRAL

**BILASPUR :**  
Mobile : 9752598469

**JABALPUR :**  
Mobile : 9752593831

**GWALIOR :**  
Mobile : 9752593834

**BHOPAL :**  
Mobile : 9826812147





***Kajaria***

INDIA'S NO. 1 TILE COMPANY



# ***Kajaria***




INDIA'S NO. 1 TILE COMPANY

## **Kajaria Ceramics Limited**

Corporate Office: J1/B1 (Extn.), Mohan Co - op Industrial Estate, Mathura Road, New Delhi - 110044, Ph.: 011-26946409

Regd Office: SF-11, Second Floor, JMD Regent Plaza, Mehrauli Gurgaon Road, Village Sikanderpur Ghosi, Gurgaon-122001, Haryana, Ph.:0124-4081281

CIN No. : L26924HR1985PLC056150, E-mail: [info@kajariaceramics.com](mailto:info@kajariaceramics.com), Web.: [www.kajariaceramics.com](http://www.kajariaceramics.com)

 [facebook.com/KajariaCeramicsLimited](https://facebook.com/KajariaCeramicsLimited)  [twitter.com/KajariaCeramic](https://twitter.com/KajariaCeramic)  [instagram.com/kajaria.ceramics](https://instagram.com/kajaria.ceramics), Tollfree : 1800-309-309

Download Kajaria App

